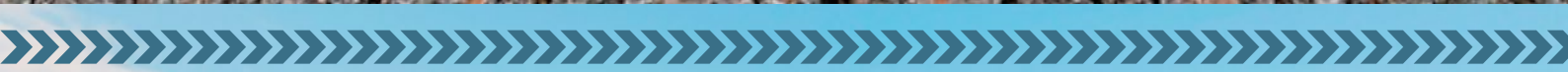


vithaus.eu



VITHAUS



PREFABRICATED HOUSES

DESIGN
MANUFACTURE
SALE



VITHAUS company

we produce standard and individual prefabricated wooden houses and export houses to Europe

WE ARE OFFERING

PREFABRICATED WOODEN HOUSES

according to standard
and individual projects

Standard modular houses are represented by the KOSHAUS and CUBEHAUS ranges. These houses consist of fully finished mobile modules and utilities, are easily transported and quickly mounted on the plot into a ready-to-live building.



The houses of INDIVIDUALHAUS range are produced in the form of wall, floor and roof panels using frame technology. These are houses with a large area, up to 3 floors with complex architecture. They are quickly assembled in a finished building, requiring refinement of the finish and internal engineering networks.



The production of houses and elements from CLT allows to realize the most daring architectural ideas of customers. A plant located in Latvia, with an area of 5000 m², with a production capacity of 20,000 m³ CLT per year, allows us to produce up to 200 prefabricated and modular houses per year.



Individual prefabricated wooden houses, baths and saunas made from Karelian dry pine KELO. Selection, harvesting of wood and logging takes place in the Karelian taiga. Houses are delivered in the form of prefabricated house kits.

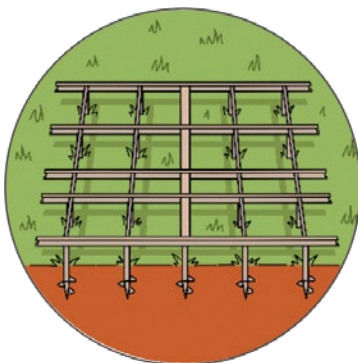


We build houses all over the European Union and beyond. We are looking for sales representatives, ready for long-term cooperation. You can receive detailed information about the conditions by mail by writing a request to office@vithaus.eu

STANDARD MODULAR HOUSES

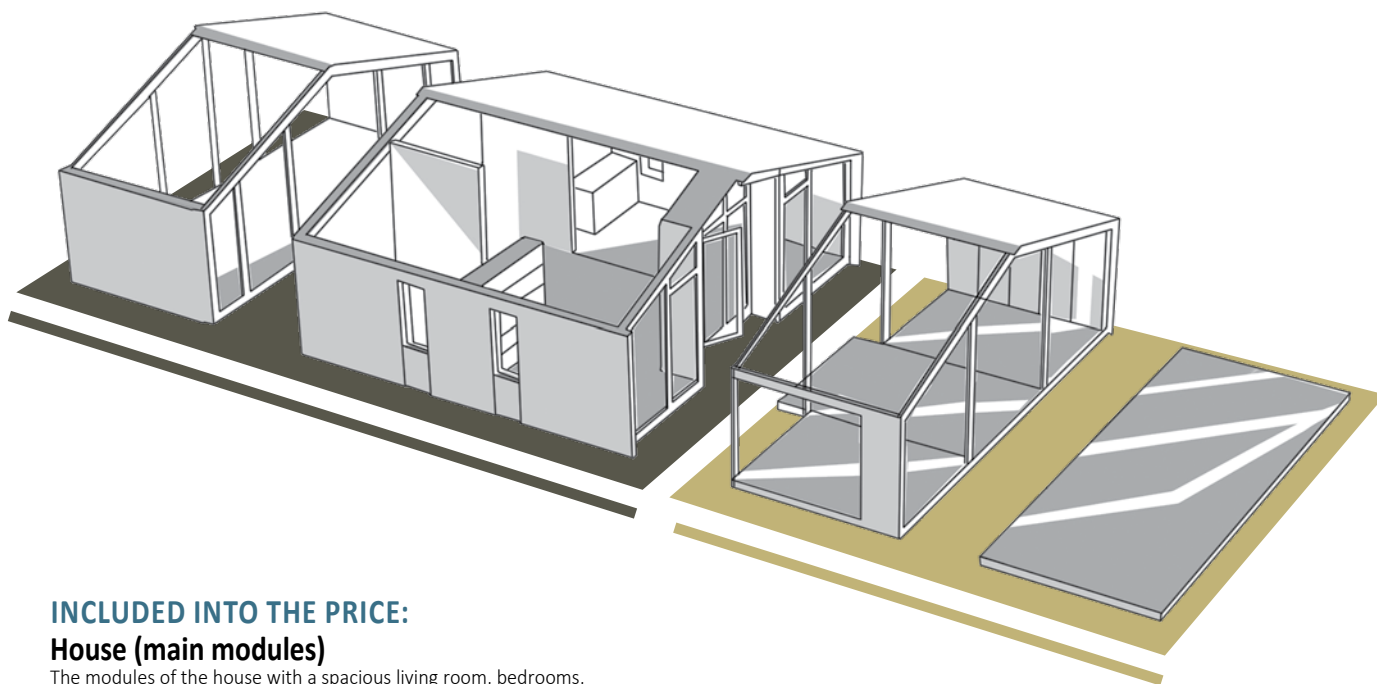
**consist of mobile modules
that form a modern, living space,
ready for living**

The modular houses are manufactured at the factory, providing furniture quality, full control of the entire production cycle and the last but not the least - high technology and cost reduction of the whole project. The house is transported in a finished and assembled way and then mounted on the plot of land within a few days.





What is included into the price



INCLUDED INTO THE PRICE:

House (main modules)

The modules of the house with a spacious living room, bedrooms, a study, a hallway, a closet, a bathroom depending on the size of the house. External dimensions, house area are based on the selected model of the house.

The veranda

Addition to the house that protects it from hot sunshine in summer and gives access to the sun in winter, which helps to keep the house warm.

NOT INCLUDED INTO THE PRICE:

- Porch
- Terrace
- Barn

Addition to the house, utility room.



IN THE HOUSE ALL
COMMUNICATIONS ARE
ALREADY INSTALLED:
ELECTRICAL
EQUIPMENT, PLUMBING
AND SEWERAGE.
THEREFORE
IT IS NECESSARY
ONLY TO
BE CONNECTED
TO THE GENERAL
NETWORKS (SYSTEMS).



The main advantage of the project – factory production which allows to considerably increase the quality and to reduce product cost.

TECHNICAL DATA

1. ROOF CONSTRUCTION (FROM INSIDE TO OUTSIDE):

Roofing covering: metal profiled sheets (panels for roofs), color – graphite gray RAL 7024, matte.

Roof battens: planed board 20×96 mm, pine.

Counter battens: planed bar 25×45 mm, pine.

Condensation protection: diffusion membrane for roofing.

Counter battens: planed bar 45×45 mm, pine.

External insulation of a frame: fiberboard Isoplaat 25 mm.

Thermal insulation: rock wool 250 mm.

Frame: planed bar 45×250 mm, pine.

Internal insulation of a frame: vapour barrier; 10 mm gypsum fiberboard.

Counter battens: planed board 45×95 mm, pine.

Insulation: rock wool 100 mm.

Dust barrier: craft paper 80g/m²

Internal surfaces (ceilings):

natural wooden cladding 20×145/195 mm; pine, coating – SIKKENS, color – white.

2. CONSTRUCTION OF EXTERNAL WALLS (FROM INSIDE TO OUTSIDE):

Facade (along the slope of the roof):

metal profiled sheets (panels for roofs), color – graphite gray RAL 7024, matte.

Face walls: the planed board, AB grade; SIKKENS coating, color – gray graphite.

Roof battens: planed board 20×96 mm, pine.

Counter battens: planed bar 25×45 mm, pine.

External insulation of a frame: fiberboard Isoplaat 25mm.

Thermal insulation: rock wool 200 mm.

Frame: planed bar 45×195 mm, pine.

Internal insulation of a frame: vapour barrier; 10 mm gypsum fiberboard.

Counter-battens: planed bar 45×45 mm, pine.

Insulation: rock wool 50 mm.

Dust barrier: craft paper 80g/m²

Internal finishing:

– internal surfaces of the walls located along a slope of a roof are finished by wooden pine cladding 20×145/195 mm, coating – SIKKENS, color – white;

– internal surfaces of the face walls located across the roof ridge are planked wall with 20×145/195 mm pine, SIKKENS coating, color – gray graphite;

– in the bathroom: the mosaic tiles 29,8×29,8 mm (Kerama Marazzi, the Temari collection), color – gray graphite matte (20064), on a cement fiberboard 10 mm with waterproofing;

- part of the walls in the bathroom are finished with plank 20×145/195 mm, pine, coating – SIKKENS, color – gray graphite.

3. STRUCTURE OF INTERNAL WALLS:

Frame: planed bar 45×95/145 mm, pine, AB grade.

Thermal insulation: rock wool 100/150 mm.

Internal and external insulation of a frame:

vapour barrier;

Finishing:

- internal surfaces of the walls located along a slope of a roof are finished by wooden cladding 20×145/195 mm, pine, coating – SIKKENS, color – white;
- internal surfaces of the face walls located across the roof ridge are planked wall with 20×145/195 mm, pine, coating – SIKKENS, color – gray graphite.

4. STRUCTURE OF FLOOR

(FROM INSIDE TO OUTSIDE):

The fine finishing of the floor:

In residential areas on the floor :

- laminate EGGER (ECO) (33rd class of abrasion, HOME CLASSIC collection, oak, color – to choose) ; underlayer for laminate;
- base – moisture resistant plywood 21 mm.

You can optionally choose:

- Karelia Midnight parquet board with natural oak coating 12 mm;
- underlay for parquet board 3 mm,
- base – moisture resistant plywood 21 mm;

In the bathroom:

- mosaic tiles 29,8×29,8 mm, Temari collection, color – matte gray graphite (20064); waterproof layer;
- base – cement fiberboard 20 mm.

Insulation of the frame: vapour barrier.

Thermal insulation: rock wool 250 mm.

Frame: planed bar 45×250 mm, pine.

External insulation of the frame: cement fiberboard

Rough finish: planed technically dried board 45×145 mm, larch, with bioprotective antiseptic coating.

During installation, galvanized reinforced fasteners are used. Coating – SIKKENS, color – black.

5. WINDOWS AND ENTRANCE DOORS:

Windows and entrance doors: wooden frames 78 mm with double seal circuit. Triple-glass windows with low-e glass 4×12×4×12×4i. Factory painting – SIKKENS, color – gray graphite. Roto NT accessories. On the doors – reinforced hinges, mortise lock.

Panoramic window: reinforced triple-glass with low-e glass: triplex 4×14×4×14×4i tempered glass.



IN PRODUCTION
AND
INSTALLATION
WE USE
STRENGTHENED
GALVANIZED
FIXINGS.





Can be expanded

Small modular house can become a temporary house while you will build the main house, and then turn into a cozy guest house, or become the main house that can be expanded and developed.



6. ELECTRICS:

Electrical wiring is hidden (in the frame).

The cable laying in the walls is made in metal corrugation with PVC insulation.

The wiring is made with a cable FRLS:

- lighting cable Fil Cu 3×1.5 mm;
- sockets cable Fil Cu 3×2.5 mm;
- electrical heating cable Fil Cu 3×4 mm;
- hob and oven cable Fil Cu 5×4 mm.

Socket groups are double-positioned, ceramic based.

Input circuit breaker – three-pole circuit-breaker 25A, category B. Lighting – circuit breakers 10A, household sockets – circuit breakers 16A, on the kitchen stove, sockets in wet areas – differential circuit breakers.

7. NETWORK ENGINEERING:

Sewerage: PVC pipes 50/110 mm.

Connection with external networks.

Water supply: seamless polypropylene pipe Ø20 mm, combined with a flexible attaching pipe (protection against leaks). Connection with external networks.

Heated floor in the bathroom: heating mats with a thermostat Warmehaus.

Ventilation: forced in the bathroom and natural in the kitchen. Ventilation duct 100 mm. Fan riser on the roof.



8. OTHER:

Sink tap: Grohe, chrome.

Wash basin in the bathroom: Cersanit/ Villeroy&Boch Avento 60×47 furniture set with a drawer

Toilet bowl: Cersanit Carina/Villeroy&Boch O.novo.

Shower tap: Grohe, chrome, with Grohe shower set.

Shower room:

– bathroom 700×1700 mm with a front panel;
or

– shower area glazing: 10 mm thick tempered glass, 1900×850 mm, transparent, colorless, in a set with metal profile for fixing to the floor and to the wall.

Storage water heater: Electrolux EWH 100 Royal Flash Silver.

Kitchen arrangement (for laying communications): outputs of water supply and sewerage; output for the sink; output electric cable for connecting the kitchen hob, refrigerator, kitchen hood.

ADDITIONAL EXPENSES:

- delivery from the seller's warehouse to the building site (calculated individually);
- installation on the building site;
- crane rental 25 t for installation works;
- installation of the foundation on the site.

Additional production is possible:

porch, stairs, terraces, veranda.

All wood used for production of the houses goes through technical drying and has humidity of 15-18%.

The elements are covered with antiseptic bioprotectant, and on the end are covered with a special anti-cracking protective agent.



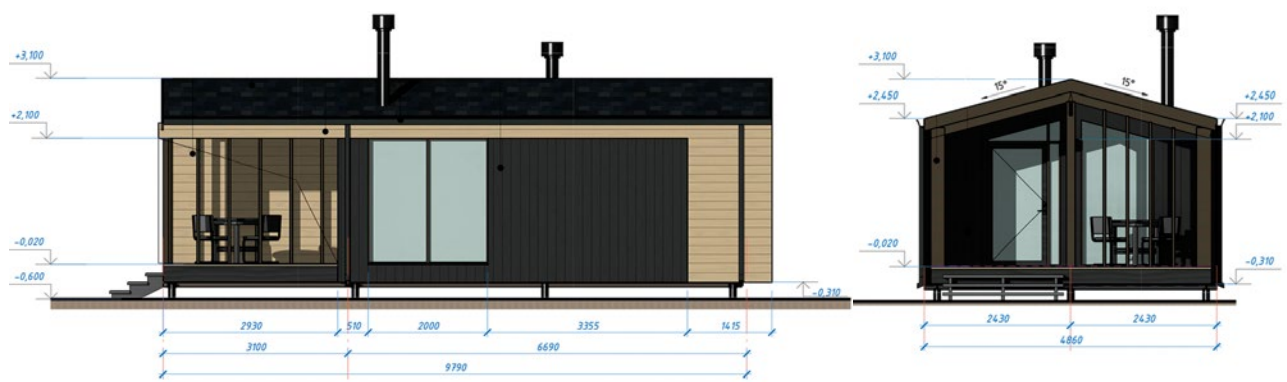
HOUSE RANGE

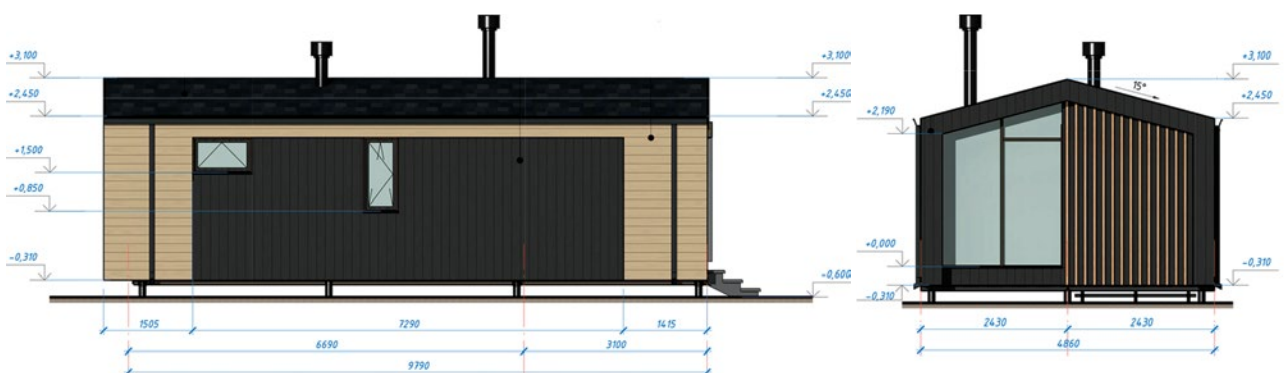
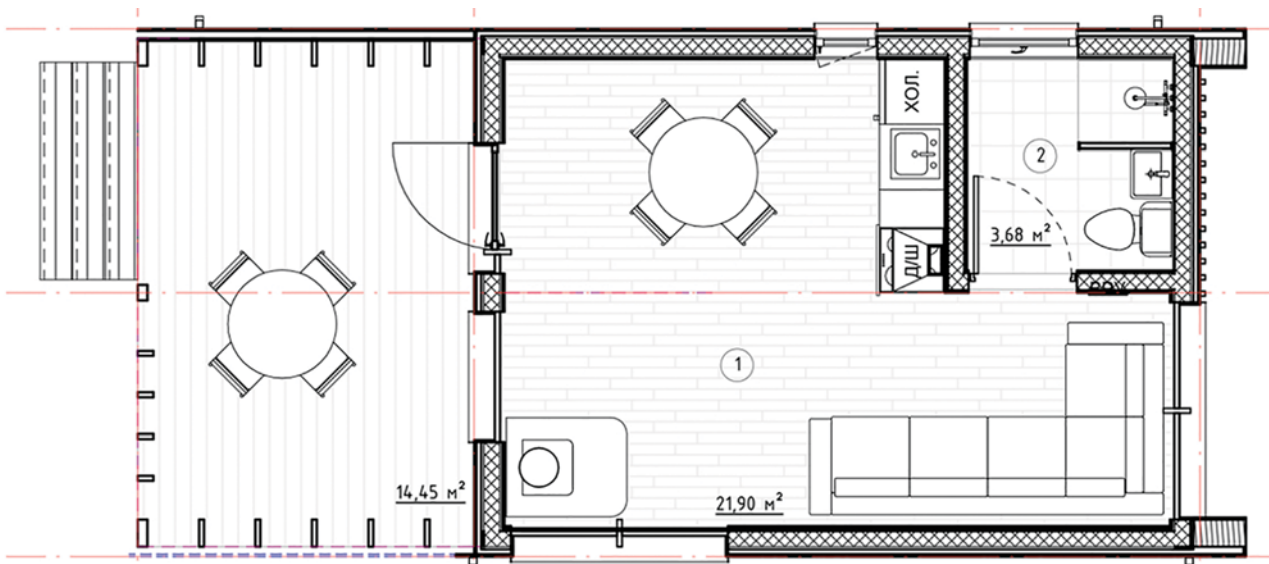
KOSHAUS 26

KOSHAUS 26 – is the smallest in the range of modular houses. Easy construction, easy to install almost anywhere. Possible options for installing floating houses on the water.

On the useful area of the house there is a bathroom, a living room with panoramic windows, one bedroom (planning v2) and a veranda. KH26 is easily transformed into a workshop, a large studio, a mini office. In the future, it is possible to increase the area of the house at least twice, by adding central modules or installing an additional floor.

| | |
|---------------------------|----------------------|
| BUILT-UP AREA: | 32,61 m ² |
| HOUSE DIMENSIONS (H×W×L): | 3,1×4,86×9,81 m |
| USEFUL AREA: | 23,01 m ² |
| VERANDA AREA: | 15,7 m ² |
| CEILING HEIGHT: | 2,10-2,7 m |
| NUMBER OF ROOMS: | 1 |







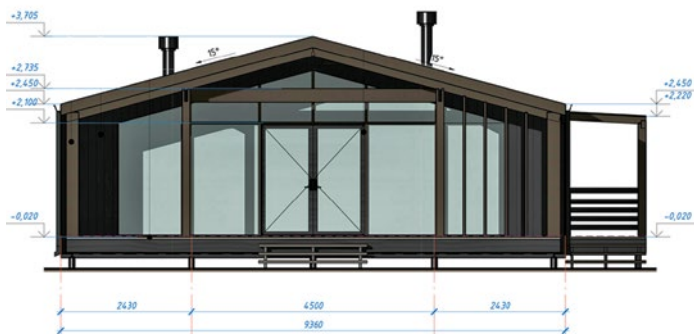
HOUSE RANGE

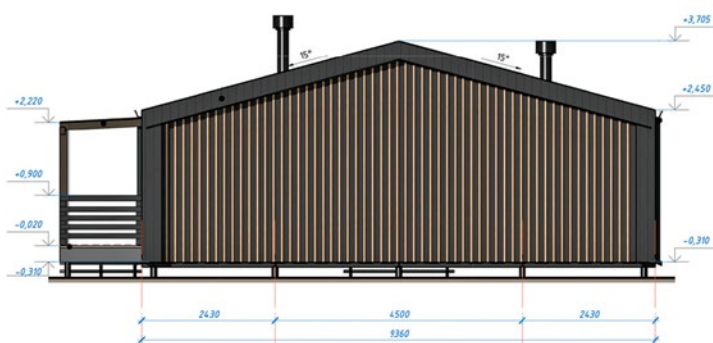
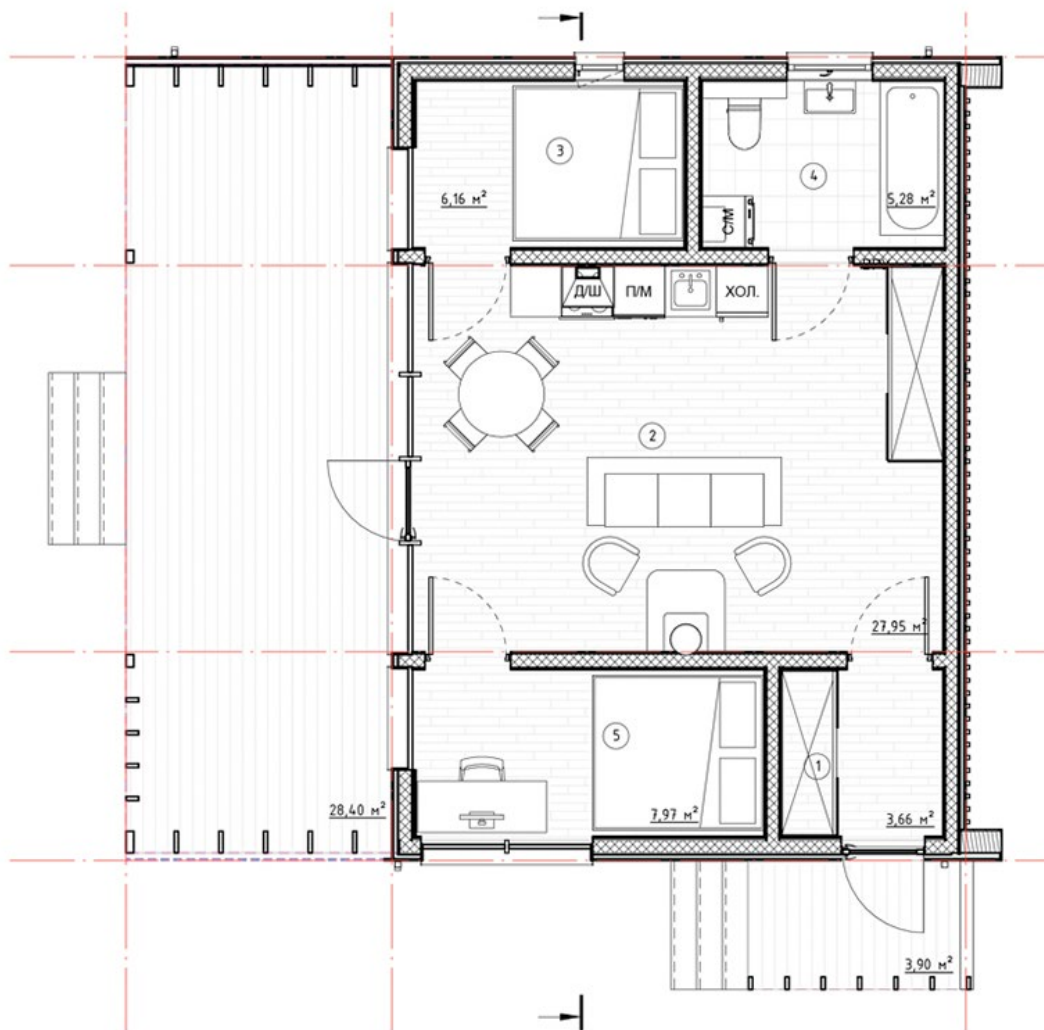
KOSHAUS 53

KOSHAUS 53 has everything you need for a comfortable stay of one person of any age or a married couple without children.

The house has one bedroom, an entrance hall, a bathroom, a kitchen combined with a spacious living room, which compactly accommodates a dining area, a TV-zone, a fireplace area and a storage area. In future, the house can be easily increased in length by adding the necessary bedrooms, cabinets, sauna, additional bathrooms and rooms for other purposes. It is possible to make this model a two-storey house.

| | |
|---------------------------|----------------------|
| BUILT-UP AREA: | 62,81 m ² |
| HOUSE DIMENSIONS (H×W×L): | 3,7×9,36×9,81 m |
| USEFUL AREA: | 48,63 m ² |
| VERANDA AREA: | 29,02 m ² |
| CEILING HEIGHT: | 2,10-3,27 m |
| NUMBER OF ROOMS: | 1-2 |







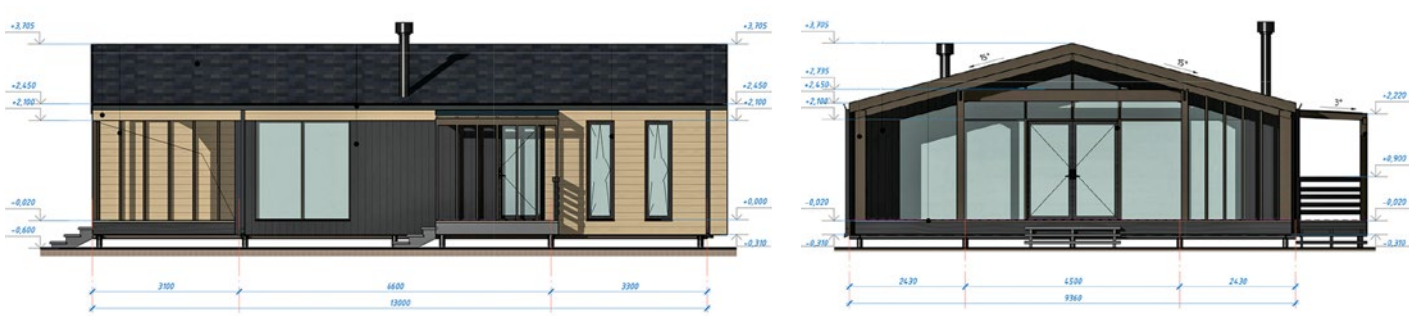
HOUSE RANGE

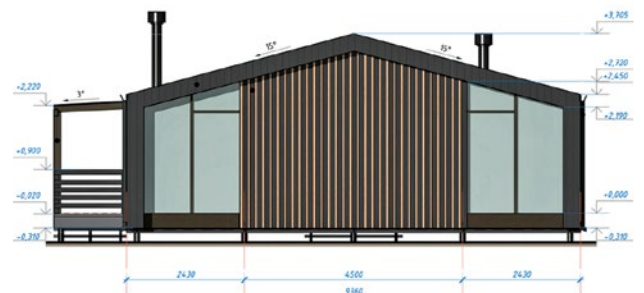
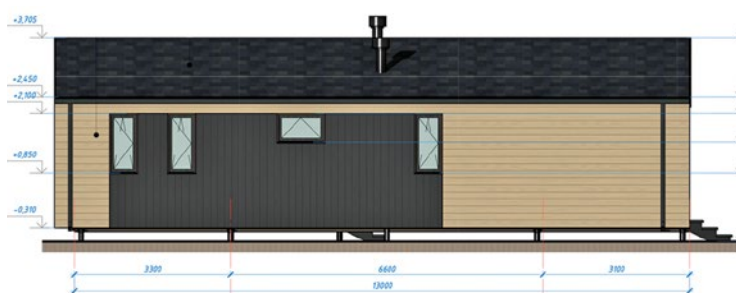
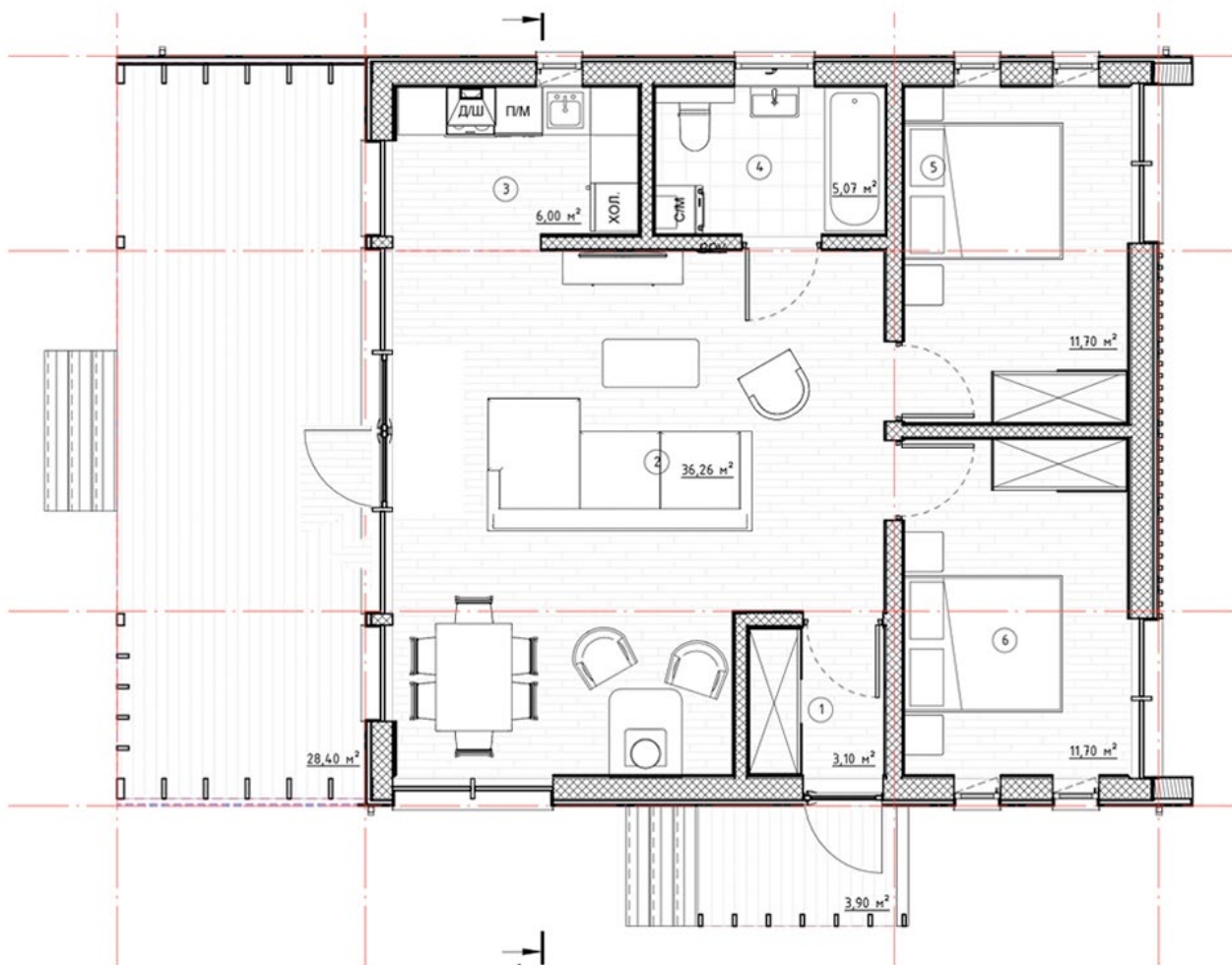
KOSHAUS 78

| | |
|---------------------------|----------------------|
| BUILT-UP AREA: | 92,67 m ² |
| HOUSE DIMENSIONS (H×W×L): | 3,7×9,36×13 m |
| USEFUL AREA: | 73,80 m ² |
| VERANDA AREA: | 29,02 m ² |
| CEILING HEIGHT: | 2,10-3,27 m |
| NUMBER OF ROOMS: | 2-3 |

KOSHAUS 78 is designed for people who appreciate every corner of a private house.

The useful area of the house of 74 m² compactly places everything necessary for comfortable living of a standard family of up to 4 people. 2 bedrooms, a separate entrance hall, a large bathroom, a kitchen, a bright living room with panoramic windows and a huge veranda will satisfy the needs of any family. In various versions of the layouts the hallway is provided from different sides of the house.







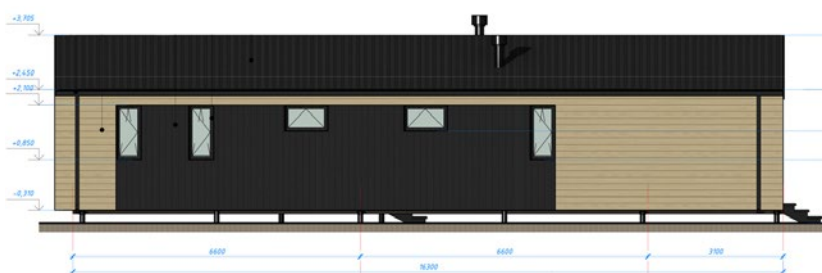
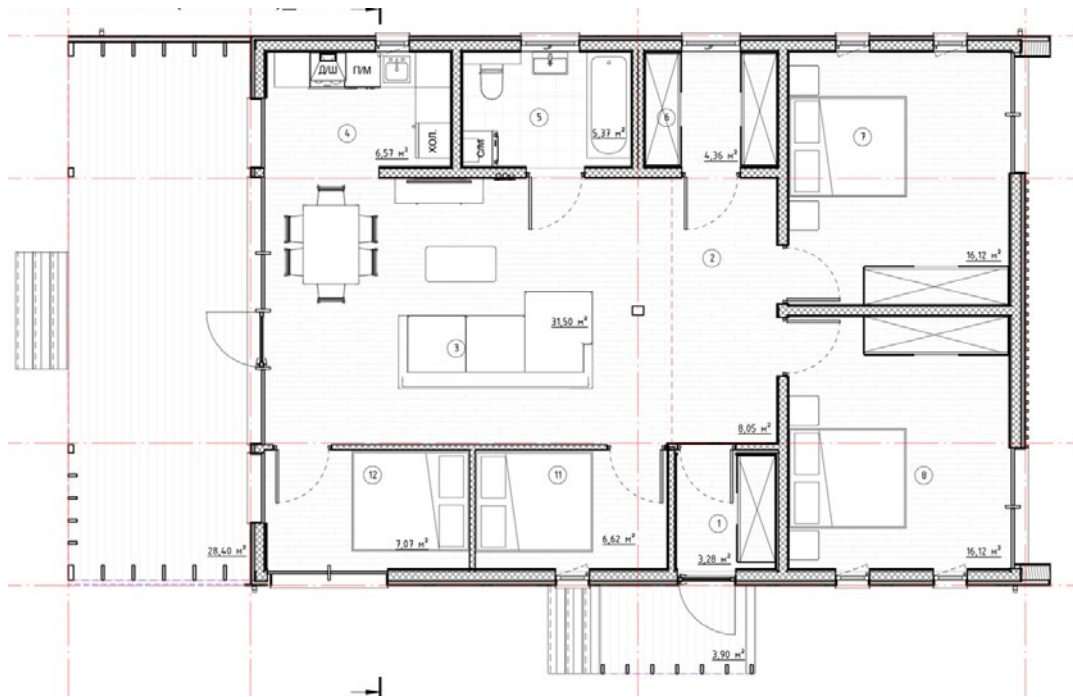
| | |
|---------------------------|-----------------------|
| BUILT-UP AREA: | 123,55 m ² |
| HOUSE DIMENSIONS (H×W×L): | 3,7×9,36×16,3 m |
| USEFUL AREA: | 101,90 m ² |
| VERANDA AREA: | 29,02 m ² |
| CEILING HEIGHT: | 2,10-3,27 m |
| NUMBER OF ROOMS: | 2-5 |

KOSHAUS 106

is a comfortable house with a spacious bedroom and a nursery.

The useful area of the house is 101.90 m². A separate room between the bathroom and the bedroom has several possible functions: the entrance hall, when arranging the entrance from the upper part of the house, a closet, a second bathroom, a sauna, a study room, an extra bedroom, a staircase to the upper floor or any other room. A large veranda will always please the whole family and the guests, and panoramic windows will always fill the house with sunlight.







| | |
|---------------------------|-----------------------|
| BUILT-UP AREA: | 154,44 m ² |
| HOUSE DIMENSIONS (H×W×L): | 3,7×9,36×19,6 m |
| USEFUL AREA: | 126,40 m ² |
| VERANDA AREA: | 29,02 m ² |
| CEILING HEIGHT: | 2,10-3,27 m |
| NUMBER OF ROOMS: | 3-5 |

HOUSE RANGE

KOSHAUS 132

KOSHAUS 132
is specially designed
for a big family.

The useful area of the house is 126.40 m² with a spacious veranda of 29.02 m² will accommodate not only a big family, but, if necessary, the same number of guests. 4 bedrooms, living room, kitchen, bathroom, closet, vestibule. Veranda is a place for summer rest. The area of the house allows you to place two more bathrooms, a sauna or an office. There are various options for the house layout and orientation of the main facade.







HOUSE RANGE

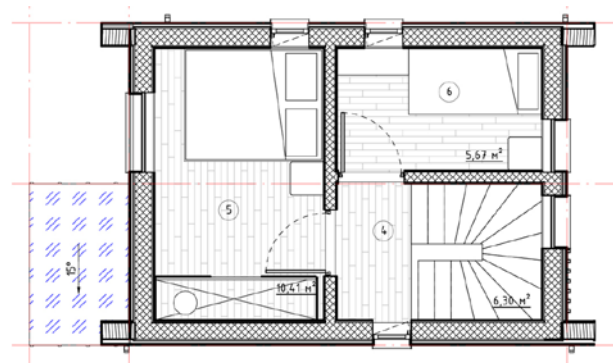
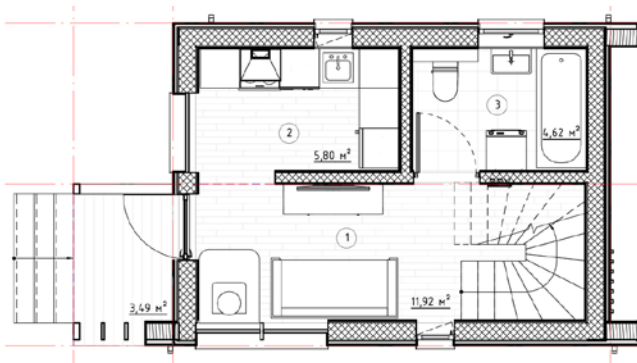
KOSHAUS 45L2

| | |
|---------------------------|----------------------|
| BUILT-UP AREA: | 32 m ² |
| HOUSE DIMENSIONS (H×W×L): | 5,79×4,86×6,6 m |
| USEFUL AREA: | 45,75 m ² |
| VERANDA AREA: | 0 m ² |
| CEILING HEIGHT: | 2,59-2,4-2,57 m |
| NUMBER OF ROOMS: | 2 |

KOSHAUS 45L2 – standard two-story house. Suitable for full-time stay of 3 people.

KOSHAUS 45L2 is a compact standard house – perfect for a small site. The house has 2 bedrooms, a living room, a kitchen and dining area, a bathroom, a veranda. This house will be the perfect solution for country living.







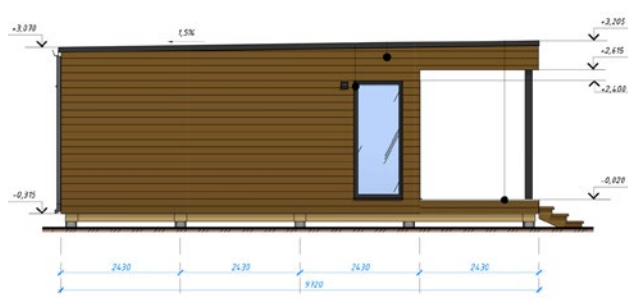
HOUSE RANGE

CUBEHAUS 80

CUBEHAUS 80 –
standard house.
Suitable for full-time
stay of 3-4 people.

CUBEHAUS 80 has 2 bedrooms, a living room with kitchen area, a bathroom, a closet, a vestibule, a terrace. If necessary, the house can be easily complemented upwards or sideways. Two entrances to the house allow to use the living space to the maximum.

| | |
|---------------------------|----------------------|
| BUILT-UP AREA: | 96,23 m ² |
| HOUSE DIMENSIONS (H×W×L): | 3,7×7,29×13,2 m |
| USEFUL AREA: | 80,15 m ² |
| VERANDA AREA: | 24 m ² |
| CEILING HEIGHT: | 2,70 m |
| NUMBER OF ROOMS: | 2-3 |





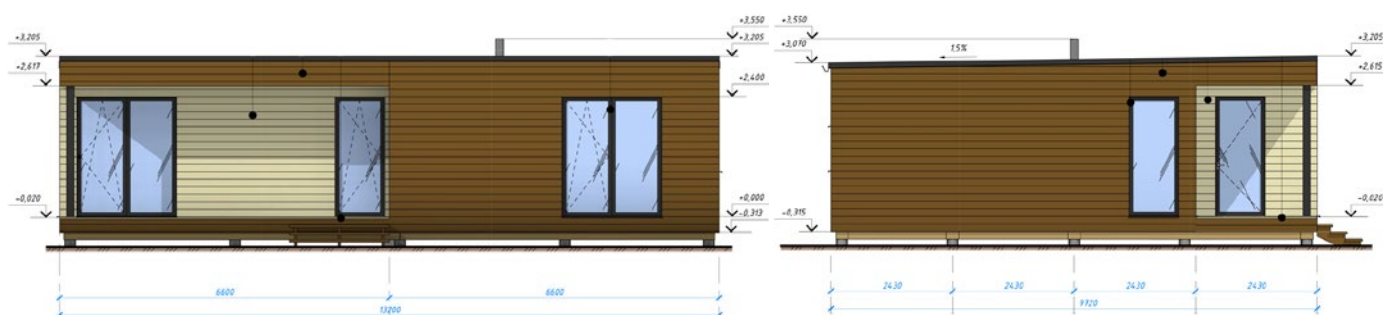
HOUSE RANGE

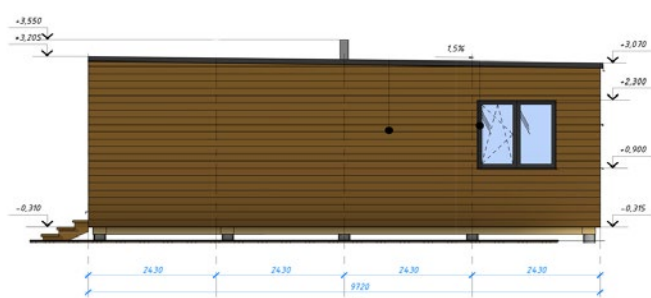
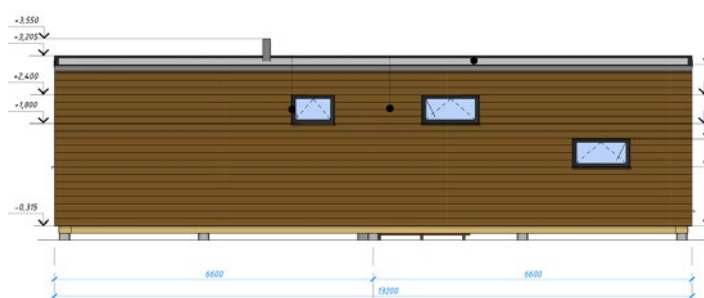
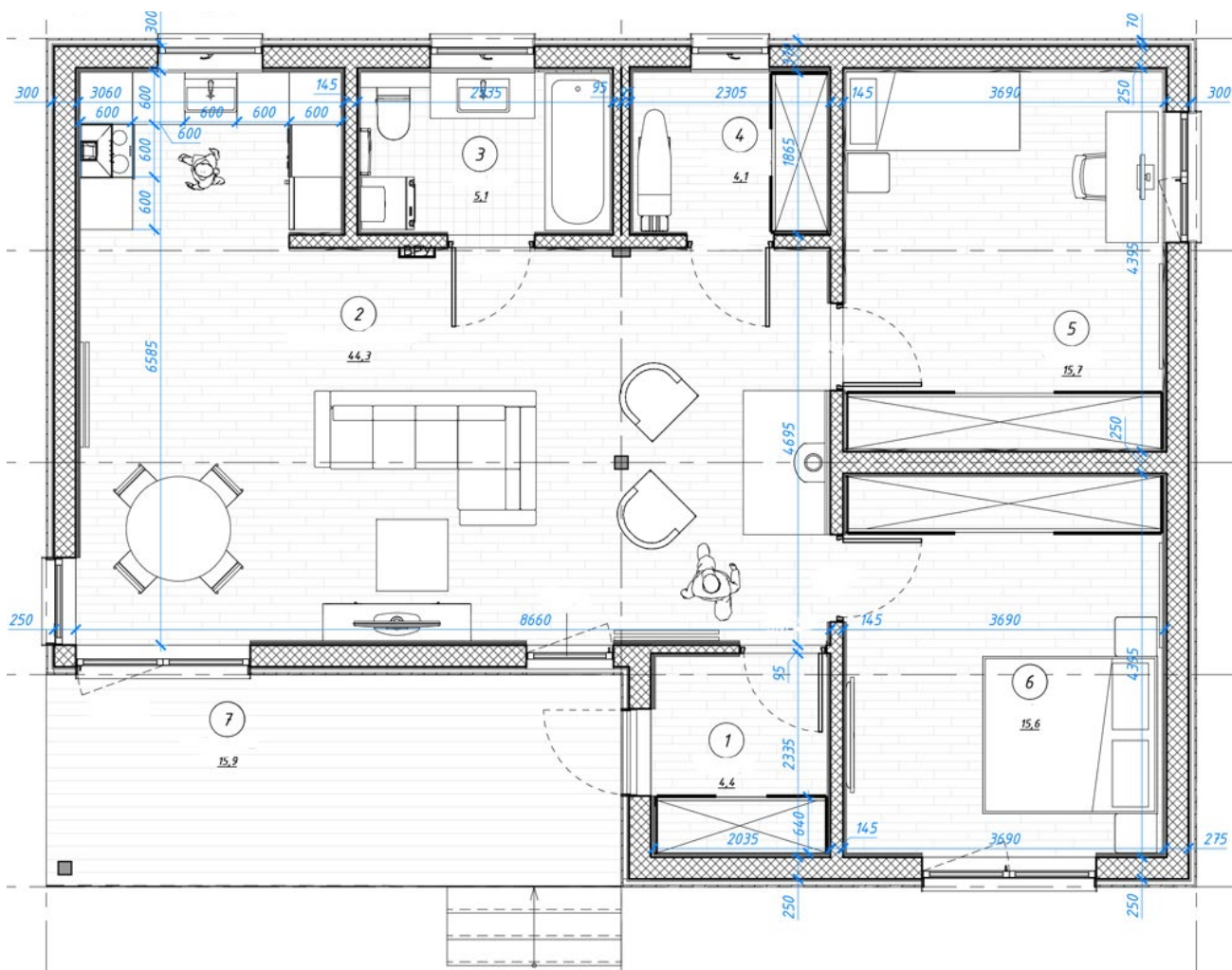
CUBEHAUS 93

| | |
|---------------------------|----------------------|
| BUILT-UP AREA: | 128,3 m ² |
| HOUSE DIMENSIONS (H×W×L): | 3,7×9,72×13,2 m |
| USEFUL AREA: | 92,63 m ² |
| VERANDA AREA: | 15,9 m ² |
| CEILING HEIGHT: | 2,70 m |
| NUMBER OF ROOMS: | 2-3 |

CUBEHAUS 93 –
typical house.
Suitable for
permanent residence
of 3-4 people.

CUBEHAUS 93 has 2 bedrooms, a kitchen-living room, a bathroom, a closet, a vestibule and a terrace. If necessary, the house can be easily complemented upwards or sideways. a closet the living space to the maximum.







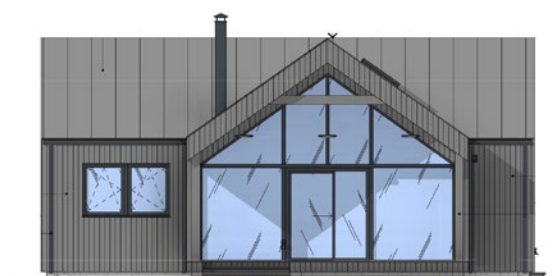
HOUSE RANGE

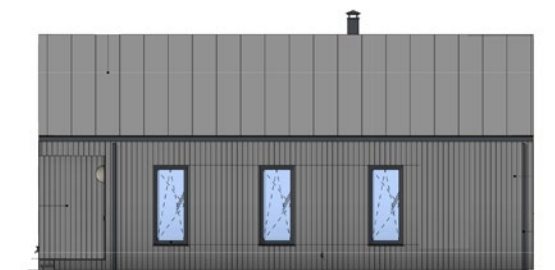
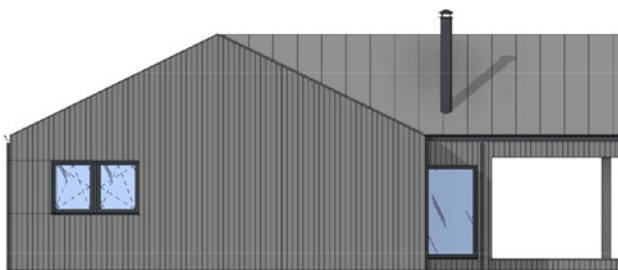
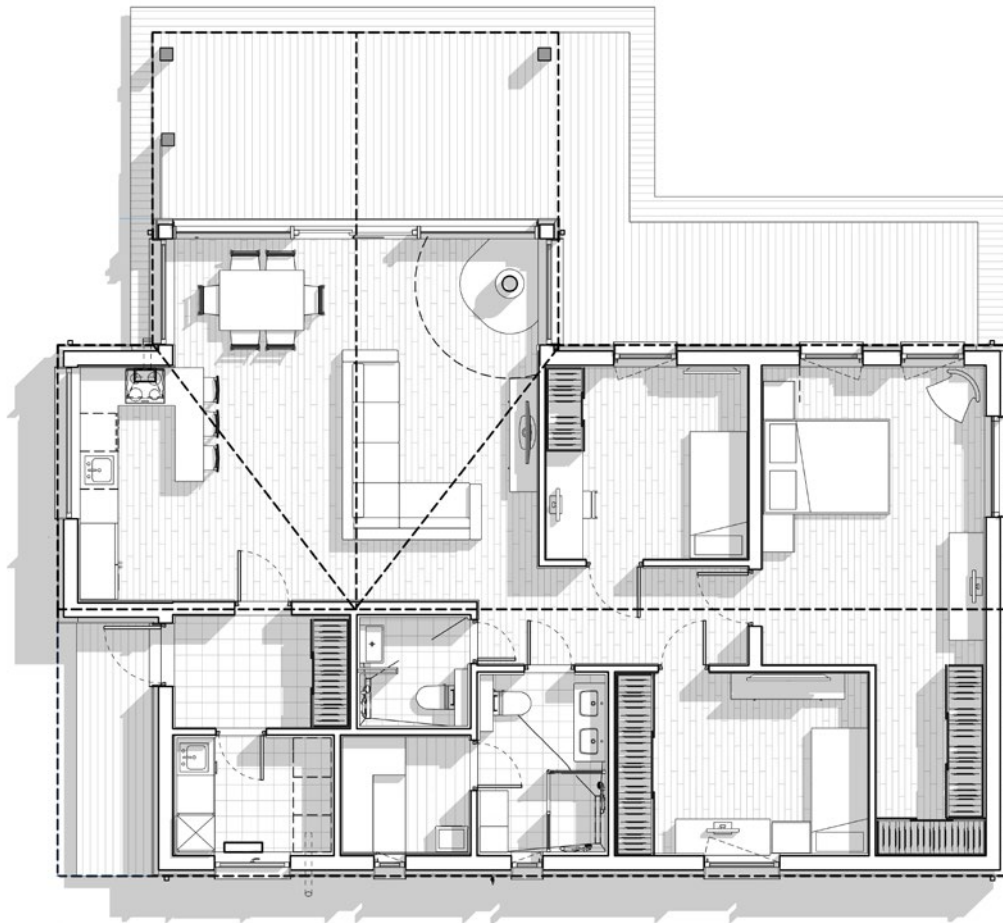
INDIVIDUALHAUS KASTOR

| | |
|---------------------------|-----------------------|
| BUILT-UP AREA: | 154 m ² |
| HOUSE DIMENSIONS (H×W×L): | 5,9×3,14×15 m |
| USEFUL AREA: | 114,60 m ² |
| VERANDA AREA: | 26 m ² |
| CEILING HEIGHT: | 2,80 m |
| NUMBER OF ROOMS: | 3 |

Individual house.
Suitable for full-time
stay of 2-3 people.

One-story house with a terrace for a small family. Living room, dining room and kitchen combined into one living area. 2 bedrooms, bathroom, vestibule. The house adjoins the terrace.







HOUSE RANGE

INDIVIDUALHAUS ARTEM

| | |
|---------------------------|-----------------------|
| BUILT-UP AREA: | 163,20 m ² |
| HOUSE DIMENSIONS (H×W×L): | 4×12,3×18 m |
| USEFUL AREA: | 106 m ² |
| VERANDA AREA: | 44,30 m ² |
| CEILING HEIGHT: | 2,80 m |
| NUMBER OF ROOMS: | 4 |

Individual house.
Suitable for full-time stay
of 4-5 people.

The house provides everything for a comfortable stay: high ceilings, a flat roof (can be another recreation area), panoramic windows, a spacious terrace, a built-in sauna, three bedrooms, a separate dressing room, two bathrooms and a huge living room with kitchen area, carport.







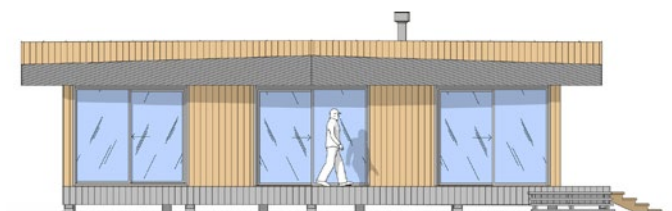
HOUSE RANGE

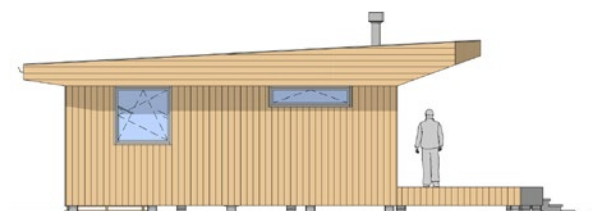
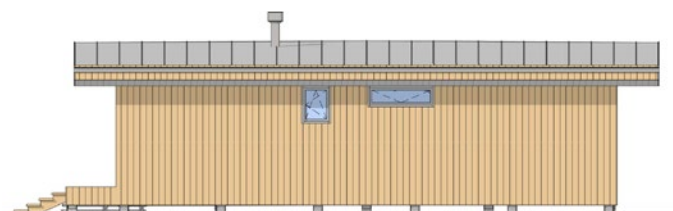
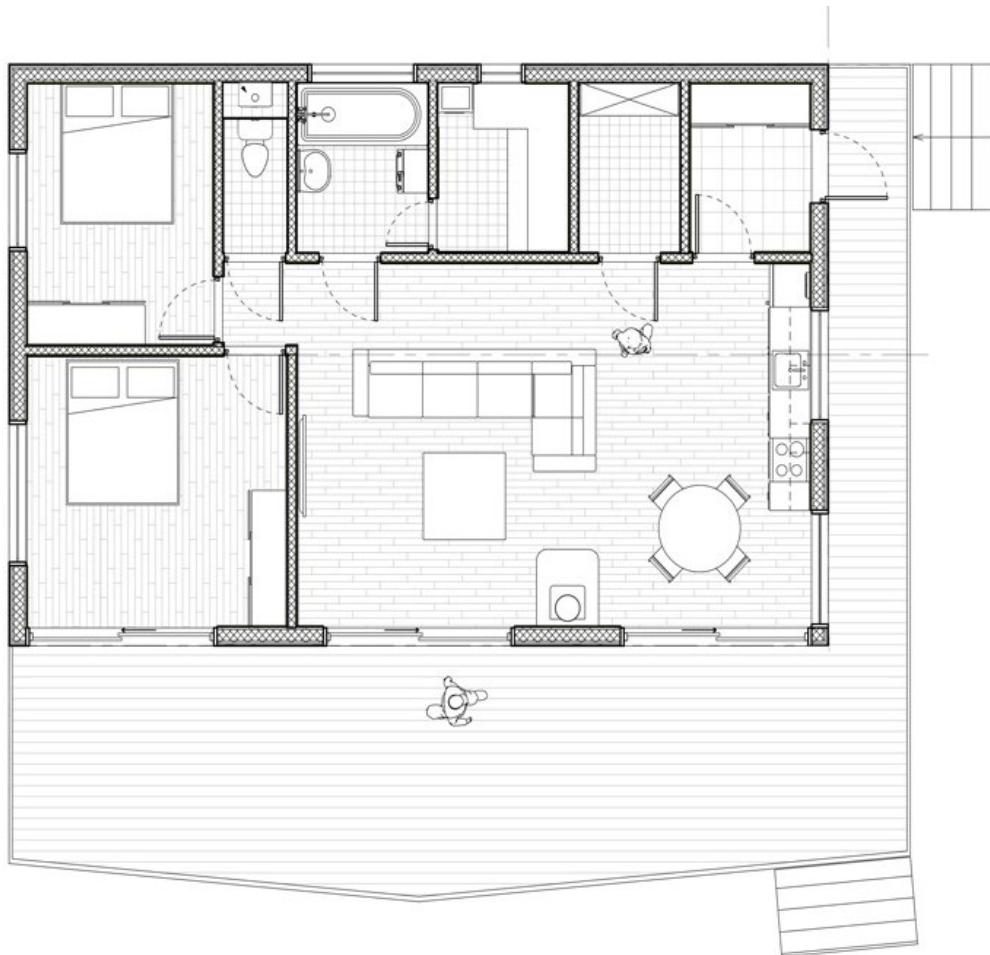
INDIVIDUALHAUS AVIATOR

| | |
|---------------------------|-----------------------|
| BUILT-UP AREA: | 154,50 m ² |
| HOUSE DIMENSIONS (H×W×L): | 4×8×12 m |
| USEFUL AREA: | 85,72 m ² |
| VERANDA AREA: | 58,50 m ² |
| CEILING HEIGHT: | 2,80 m |
| NUMBER OF ROOMS: | 3 |

Individual house.
Suitable for full-time stay
of 3-4 people.

The original shed roof of the house resembles an airplane wing. The spacious terrace repeats the shape of the roof. A large panoramic windows area of the main facade gives space for warmth and light inside, saving energy that is so necessary for house heating and lighting even in winter. 2 bedrooms, living room with kitchen area, 2 bathrooms, sauna, utility room, vestibule, terrace, carport.







HOUSE RANGE

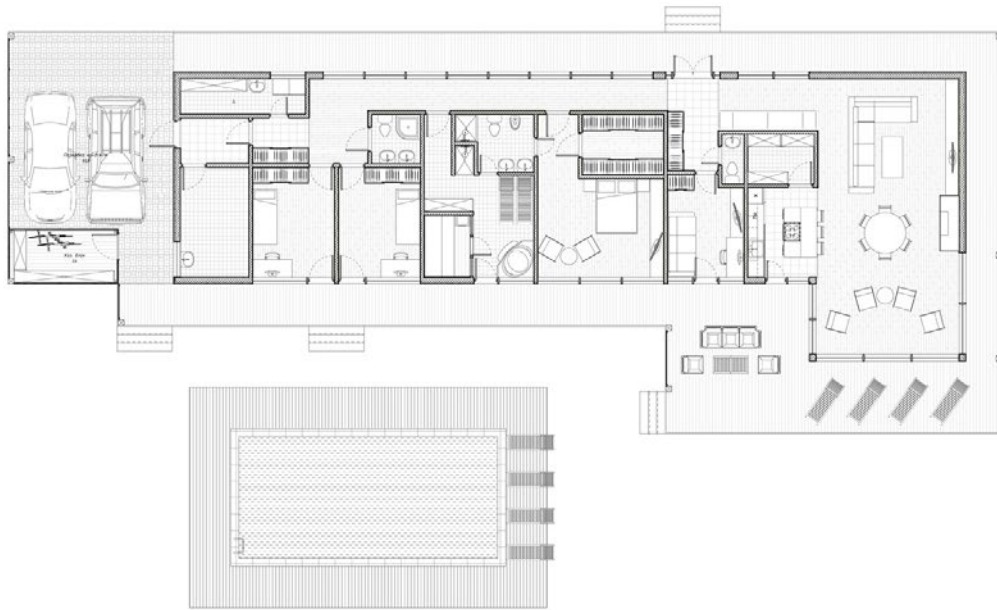
INDIVIDUALHAUS HARMONIA

| | |
|---------------------------|-----------------------|
| BUILT-UP AREA: | 419 m ² |
| HOUSE DIMENSIONS (H×W×L): | 3,7×10,5×34,8 m |
| USEFUL AREA: | 214 m ² |
| VERANDA AREA: | 181,50 m ² |
| CEILING HEIGHT: | 2,80 m |
| NUMBER OF ROOMS: | 4 |

Individual house. Suitable for full-time stay of 4-5 people.

The simplicity of the external forms of the house is compensated by the functionality of the internal space, thought out so that family members do not interfere with each other, and there is harmony in the house. The house has 3 bedrooms. The master bedroom has its own vestibule, dressing room, bathroom with sauna. In bathrooms, two washbasins are provided. The office can serve as a guest room. living room with kitchen area, 3 bathrooms, closet, vestibule, terrace, canopy for 2 cars. The south side of the house is equipped with panoramic windows, providing lighting and heating. Terrace and awnings are located around the perimeter of the house.







HOUSE RANGE

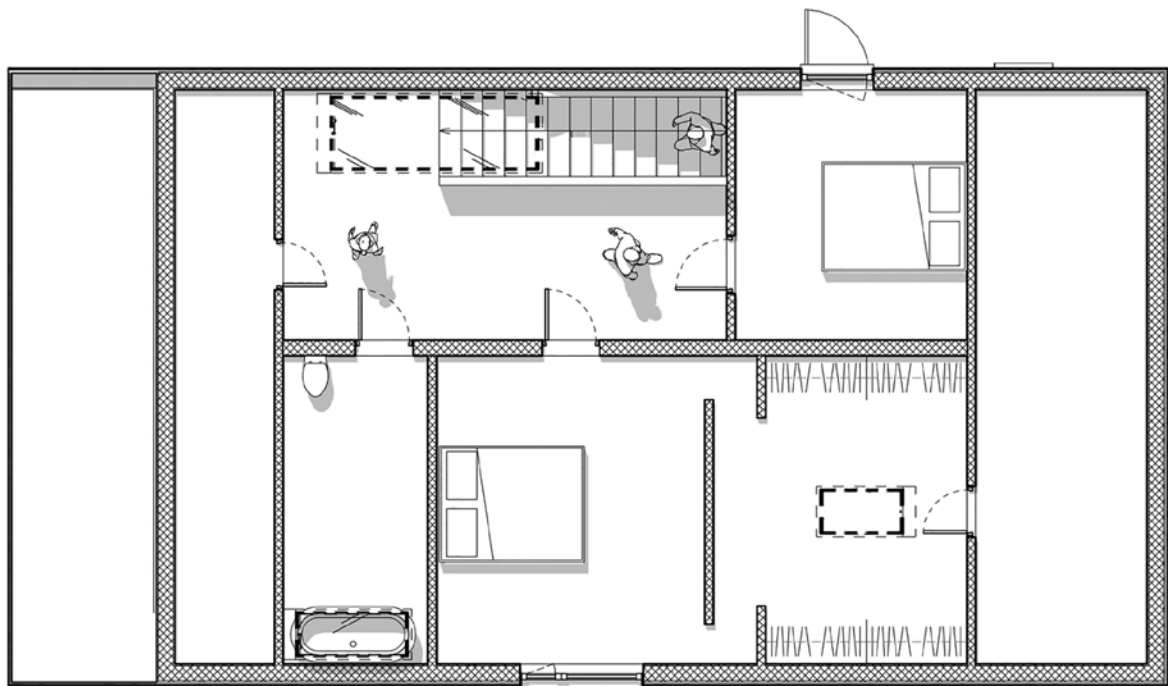
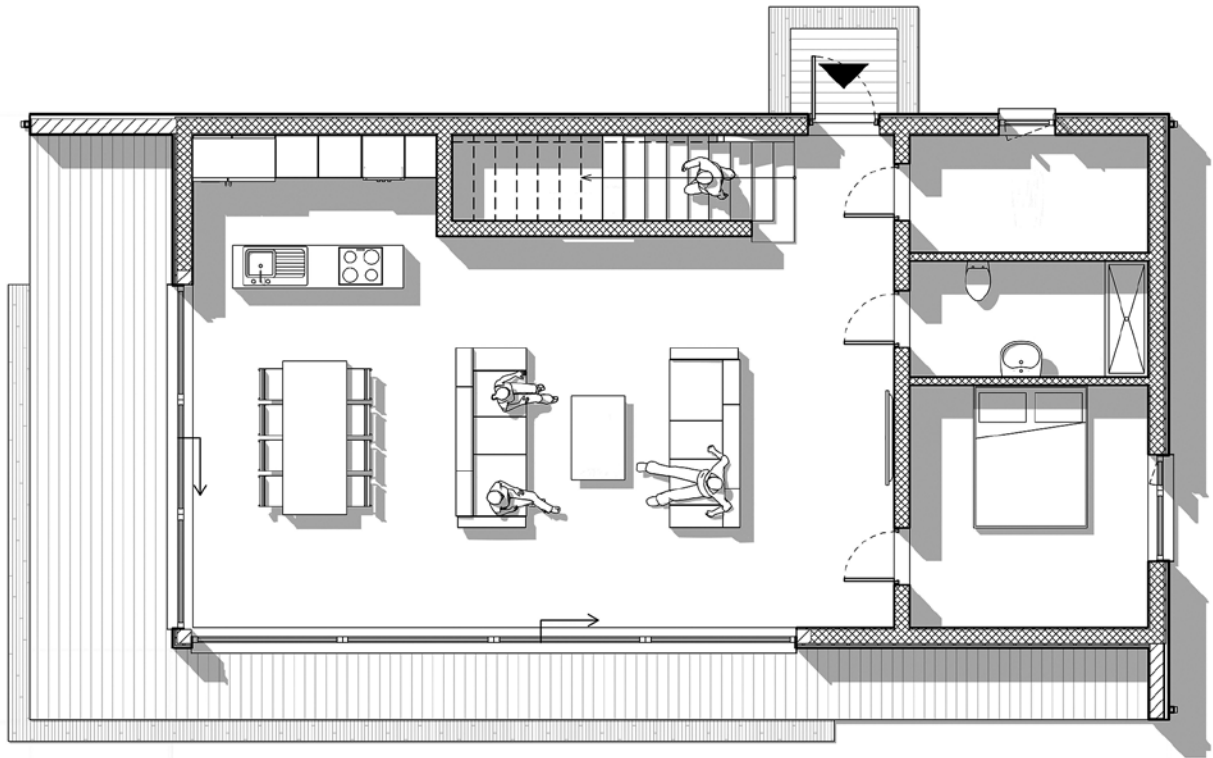
INDIVIDUALHAUS HILLTOP RESIDENZ

Individual house.
Suitable for full-time stay of
3-6 people.

One-story house with an attic. The first floor is a spacious room, divided into the living room, dining room, kitchen. Also, on the first floor there is a guest bedroom, a bathroom with a rain shower and a heating room. Almost all the southern and western walls of the first floor are wooden panoramic windows. This gives the effect of the constant presence of light inside the house. Thanks to the sliding window mechanism, the living room area increases in the warm season due to the terrace. Upper floor has a hall, two bedrooms, a dressing room, a bathroom. The space in the lowest parts of the ramp is used for storage rooms. In the places that need natural light the most attic windows are provided. One of the architectural features of Hilltop Residence is the console release of the attic floor.

| | |
|---------------------------|-----------------------|
| BUILT-UP AREA: | 154,50 m ² |
| HOUSE DIMENSIONS (H×W×L): | 4×8×12 m |
| USEFUL AREA: | 85,72 m ² |
| VERANDA AREA: | 58,50 m ² |
| CEILING HEIGHT: | 2,80 m |
| NUMBER OF ROOMS: | 3 |







HOUSE RANGE

INDIVIDUALHAUS GULLIVER

| | |
|---------------------------|-----------------------|
| BUILT-UP AREA: | 163,20 m ² |
| HOUSE DIMENSIONS (H×W×L): | 4×12,3×18 m |
| USEFUL AREA: | 106 m ² |
| VERANDA AREA: | 44,30 m ² |
| CEILING HEIGHT: | 2,80 m |
| NUMBER OF ROOMS: | 4 |

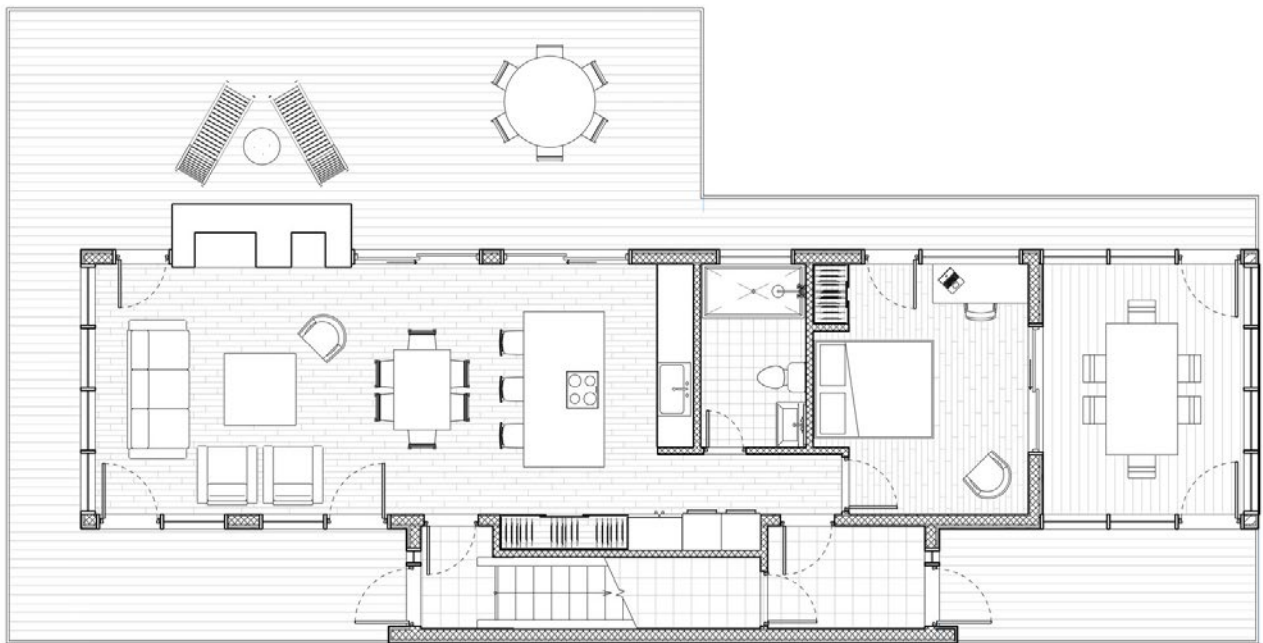
Individual house.
Suitable for full-time stay
of 4-6 people.

GULLIVER resembles a ship drifting among the green sea of grass and trees. The roof-terrace of the protruding part of the first floor resembles a deck where you can admire the open spaces.

Two pipes on the side make the similarity stronger. You can send a projector to the facade of the building and enjoy watching your favorite movies in the evenings. The spacious ground floor is intended for guests. Here everyone will find a place: living room with kitchen area, guest

bedroom, summer terrace, bathroom, storage room, hall, terrace. The second floor is a master's space with its own living room, veranda, two bedrooms, bathroom. In addition, on the second floor there is a bathroom, laundry room, storage room, utility room.







HOUSE RANGE

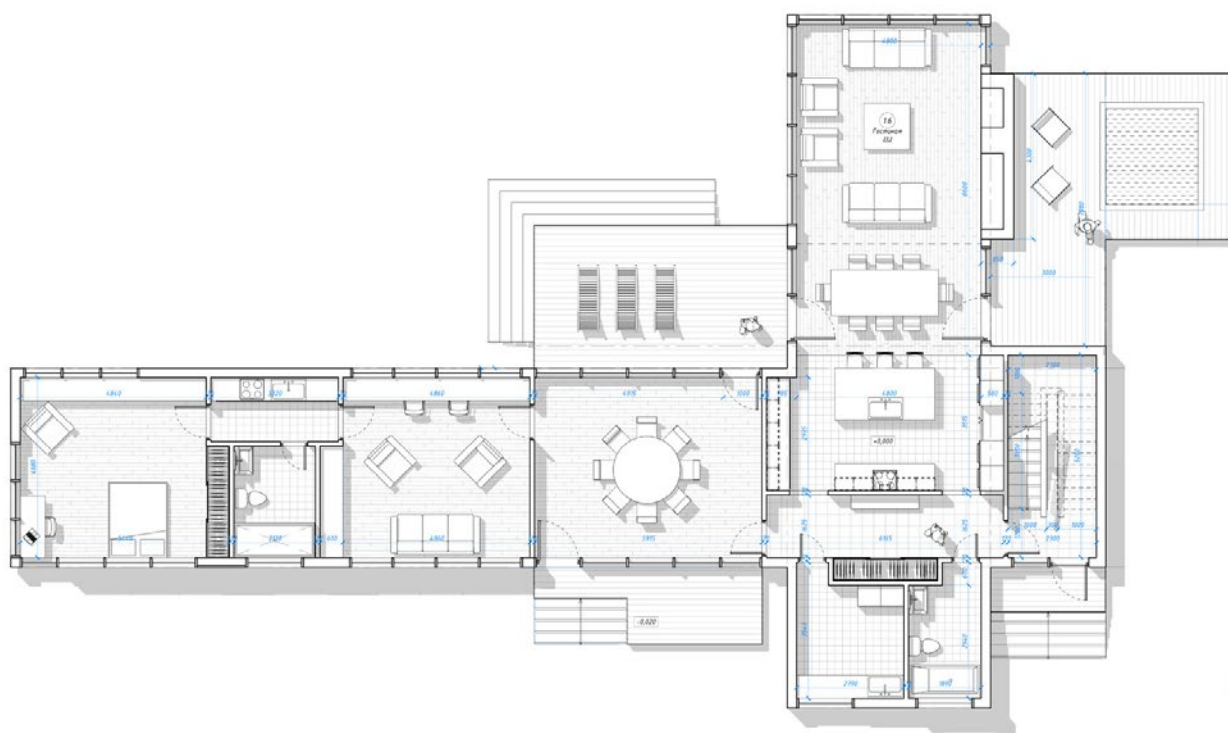
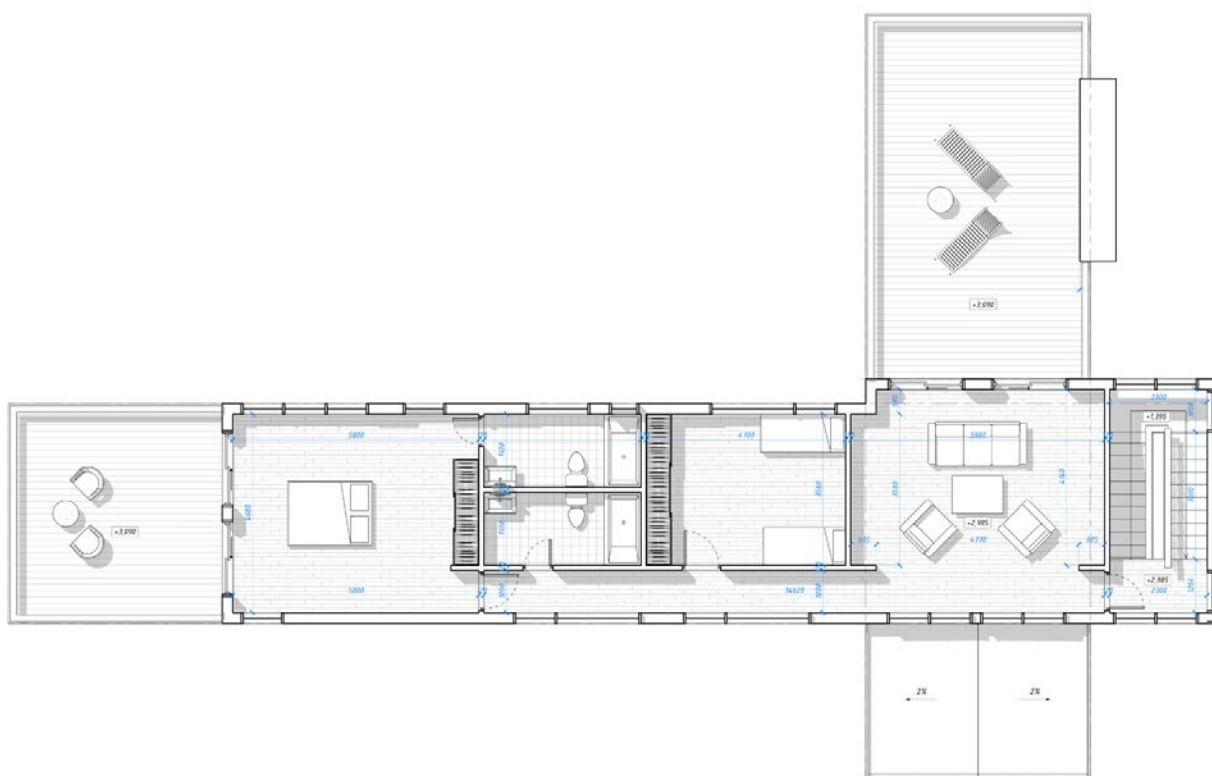
INDIVIDUALHAUS MOBY DICK

| | |
|---------------------------|-----------------------|
| BUILT-UP AREA: | 288,43 m ² |
| HOUSE DIMENSIONS (H×W×L): | 6,7×18×28,5 m |
| USEFUL AREA: | 294,3 m ² |
| VERANDA AREA: | 133,20 m ² |
| CEILING HEIGHT: | 2,80 m |
| NUMBER OF ROOMS: | 4 |

Individual house.
Suitable for full-time stay
of 4-6 people.

On the ground floor on the left side is a guest unit, consisting of a bedroom, study room, small kitchen and a bathroom. In the center of the ground floor is a living room with access to the terrace. The main unit is a living room with kitchen area, laundry room, bathroom, living room. On both sides of the living room there are terraces, which can be accessed through sliding doors. On the large terrace a swimming pool is planned. The upper floor is the main bedroom with access to the upper terrace, two bathrooms, a children's bedroom, a hall with access to the second upper terrace.







HOUSE RANGE

INDIVIDUALHAUS ECOMOTEL

| | |
|---------------------------|-----------------------|
| BUILT-UP AREA: | 218,77 m ² |
| HOUSE DIMENSIONS (H×W×L): | 6,1×9,7×22,6 m |
| USEFUL AREA: | 286,90 m ² |
| VERANDA AREA: | 120,60 m ² |
| CEILING HEIGHT: | 2,80 m |
| NUMBER OF ROOMS: | 11 |

Recreation center, hotel.
Suitable
to accommodate
22 people.

The 2-story hotel has 11 rooms with private bathrooms: 5 on the ground floor, 6 on the second. The entrance to the upper floor is carried out by external stairs. On the ground floor there is a reception with a lounge for the staff.





CONSTRUCTION TECHNOLOGY USING CLT-PANELS

CLT – Cross Laminated Timber

CLT panel production is a modern computer-controlled timber machining process.

Dried coniferous boards are pre-sorted and form of them sheets of 2.95×10.50 m. Then they are glued together under high pressure using polyurethane adhesive. This adhesive is able to achieve high adhesion without the risk of toxic emissions at any stage of the product life cycle. Depending on the need, the resulting panels consist of 3-5 layers of the board. The thickness of the panels of our production can reach up to 35 cm, length – 10.5 meters, width – 2.95 meters.



Modular production using CLT-panels or panels from insulated timber is a process of manufacturing the contour of a building – floor, wall, roof panels. Electrical wiring and plumbing are inserted into the module both at the production stage and after completion of construction. After that, the outer walls are insulated, protected from the wind and covered with decorative finishing.

Industrial production of house elements ensures maximum compression of the layers and precise panel geometry.

Our CLT panels comply with European quality standards. The whole process is certified. Only certified raw materials are used from reliable suppliers. Our product is CE marked.

Our plant is located in Latvia, with an area of 5000 m², with a production capacity of 20,000 m³ CLT-panels per year, allows us to produce up to 200 prefabricated and modular houses per year.

The production is equipped with high-tech equipment: HUNDEGGER, WEINIG, GREEKON, SIEGEL AG, etc.

Infrastructure: the nearest port is 50 km, logistically good location at the intersection of transport and raw materials flows in Estonia, Russia, Belarus, Latvia, Sweden, Norway.

**Price: 650 EUR per m³ without VAT.
FCA RIGA.**



Advantages of houses from CLT panels

1. Factory production.
2. CLT technology is several times stronger than concrete, and the weight of the panels is much lighter.
3. Cross-gluing the layers of the CLT-panel provides high dimensional stability in case of changing humidity.
4. CLT panels do not shrink; withstand enormous loads, keeping the size and shape unchanged.
5. High bearing capacity allows to set up multi-story buildings.
6. Buildings made of CLT panels are characterized by high seismic stability and sound insulation.
7. CLT panels are environmentally friendly for humans and the environment.
8. A house from CLT panels is very fast assembled, in a few days up to 150 m².



LOG HOUSES from the Karelian deadwood pine KELO

The cold climate of Karelia is a natural environment where the formation of a unique natural building material occurs – deadwood pine. Translated from Finnish KELO means – dry pine. These trees grow very slowly and, after drying, stand still for another 30-50 years. During this time, the bark falls off the tree, the trunk hardens, acquiring a beautiful silver shade.



Dry pine does not need chemical treatment during construction. Due to drying out on the roots, KELO wood is no longer susceptible to environmental influences, mold, rot, pests.

Houses made of Karelian pine do not shrink, rot, crack.

DESIGN AND CONSTRUCTION LOG HOUSES FROM KARELIAN DEADWOOD PINE KELO

We can design for you a building of any design and purpose from the dry KELO pine: house, bathhouse, tourist site.

The houses are built from pre-prepared material at the production site in Karelia. After preliminary assembly, the finished house kit is marked, disassembled, transported to the installation site and assembled into the finished product. All production specialists and installers are professional woodcutters.

WE OFFER HOUSE KIT FROM KARELIAN DRY PINE KELO:

Round timber ø 28-32 cm for 550 EUR/m3,
Round timber ø 32-38 cm for 580 EUR/m3,
Round timber ø 38-45 cm for 620 EUR/m3,
Round timber ø 45-55 cm for 710 EUR/m3,
Round timber ø > 55cm for 820 EUR/m3,
Planed boards KELO for 400 EUR/m3,
Installation of a house kit for 20%.

FCA RIGA.





Ask us for a price list for the house
and ask all the questions that interest you!



SIA VITHAUS

Legal address:

Rīga, Matisa iela 61-28

Tel.: +371 29 898828

office@vithaus.eu

vithaus.eu