



# JAK MODULES TIMBER MOBILE HOME NO.03

## **What sets our homes apart:**

All houses are suitable for year-round living, fully equipped and turnkey:

We meet the German KFW40 standard.

We are the manufacturer. You choose how you want your house to look from our catalogues.

GL24h glulam is used for the prefabricated frame construction. The sawn timber used in the frame structure of the buildings is chamber-dried and four-sided planed. The moisture content of the structural timber is no more than 15%, as the building structure is enclosed.

The kitchen is made of high-quality materials to meet your expectations. BOSCH white goods are used.

High-quality stone tiles are used in the bathroom.

For heating, we use air conditioners that operate on the principle of a 3.5 KW heat pump with a heating function to -25 degrees, with external radiators, which according to our calculation is the most economical solution for the client. In addition, we install infrared heating panels or underfloor heating in the rooms.

We provide very long guarantees on our products.

The production time is only 12

# TECHNICAL INFORMATION

Length - 11,76 m

Width - 3,76 m

Building surface area - 44,21 m<sup>2</sup>

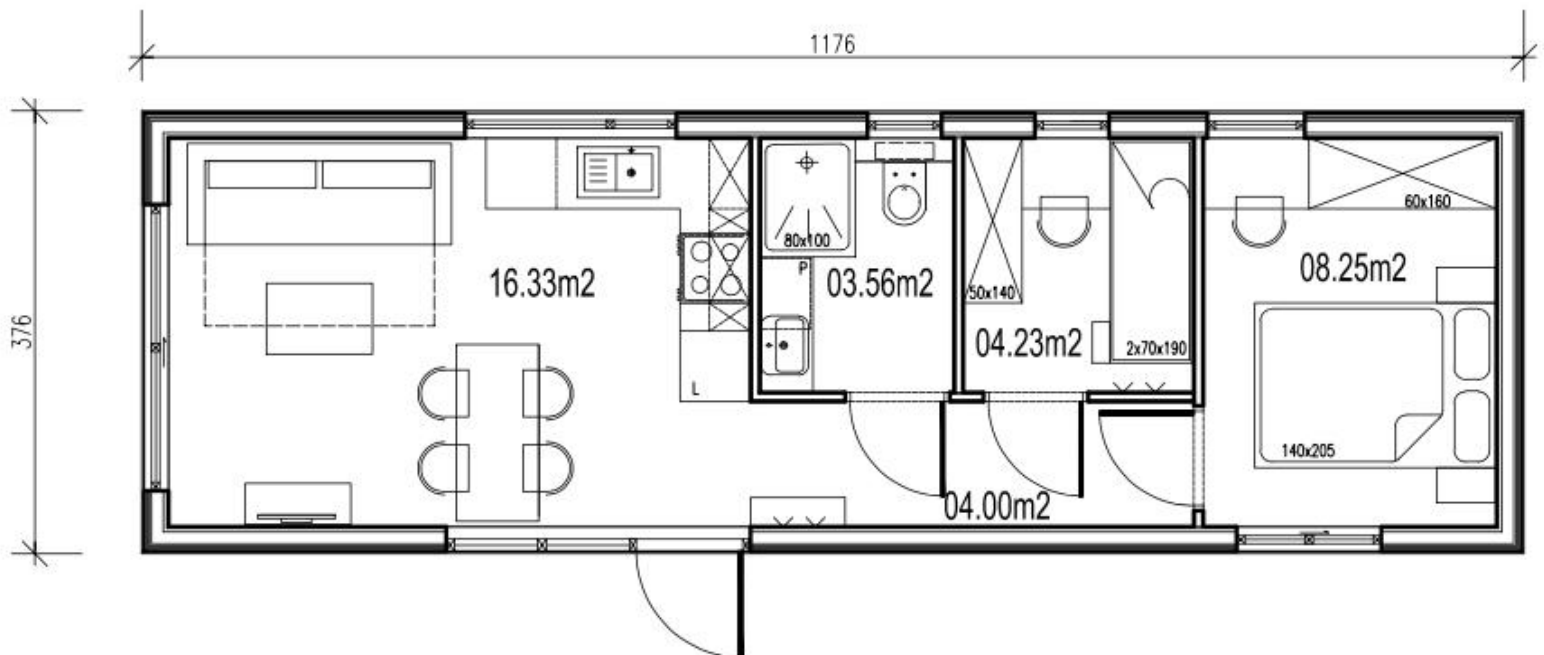
Usable area - 36,37 m<sup>2</sup>

Height - 3,45 m

Roof angle: 13 degrees

## Room area:

1. Room with kitchenette - 16,33 m<sup>2</sup>
2. Bathroom - 3,56 m<sup>2</sup>
3. Room - 4,23 m<sup>2</sup>
4. Bedroom - 8,25 m<sup>2</sup>
5. Hall - 4,00 m<sup>2</sup>



**Construction:**

House based on durable GL24H pine timber construction

**Floor:**

Underside of house protected with dysperbitol. Thermal insulation of 12 cm mineral wool, vapour barrier foil and floor panel.

**External walls:**

Pine tongue and groove facade board protected with varnish. Windproofing and 10 cm of mineral wool. Vapour barrier and Forestia wall panel on the inside.

**Roof:**

Seam sheet, roof membrane, 12cm insulation. Vapour barrier and SUPERPANEL ceiling panel on the inside.

**Joinery:**

6-chambered, double-glazed pvc windows, anthracite colour, with ventilators for air circulation, glazed pvc external doors. Smart Slide sliding doors in the living room.

Bathroom finished with ROCKO bathroom panels with complete sanitary fittings: suspended toilet, built-in shower cubicle, cabinet with sink.

Complete kitchen with white goods: oven with thermo-circulation, induction hob, wrap with carbon filter. Oak kitchen countertop.

Heating of the house based on radiant heat + ladder radiator in the bathroom. DHW 50L boiler.

# Materials used by JAK MODULES for interior fittings

## Walls

### WALL PANELS FOR INTERIOR DESIGN



Simplicity and aesthetics  
Interior Design wall panels  
are the ideal product for  
both walls and attics.  
Our panels are a high-quality  
product that is functional,  
easy to install and has both  
a structural and finishing  
function.



White G PP A



Light Grey Textile PAP CH



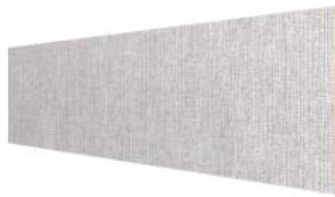
Me Twill Cream R



White Textile 426 V



Light Grey Textile V



Grey Textile V



Woodec Turner Oak Malt C



Turner Oak Toffi C



Mattex Kitami Dark C



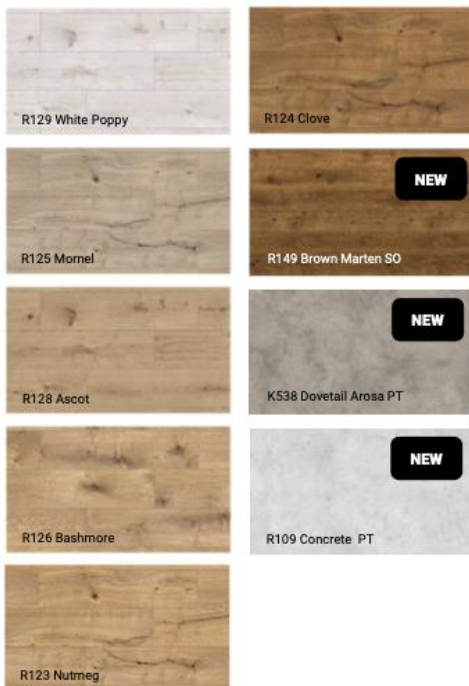
Grey Concrete L

# Flooring

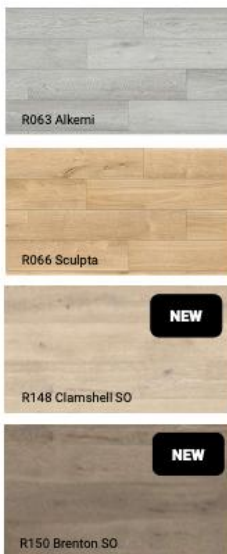
We use Rocko brand vinyl panels  
In our modular homes, we use SPC vinyl panels with a beautiful design and exceptional performance. They are produced using a digital printing process and provide the look of natural wood and stone in fine detail. As with natural flooring, the pattern changes according to the décor, allowing up to 14 m<sup>2</sup> to be installed without repeating individual panels. SPC vinyl planks are extremely dimensionally stable and therefore suitable for installation in sunny and high-traffic areas. Their water resistance and high resistance to damage and scratches make them ideal for kitchens and bathrooms and high-traffic areas.



Format: 1.210 x 295 mm



Format: 1.210 x 234 mm



Format: 1.210 x 192 mm



## BATHROOM

### Sanitary ceramics

Since 1748, the Villeroy & Boch brand has been synonymous with high quality and beauty, with advanced ideas and techniques in ceramics. Villeroy & Boch's ambition has always been to create a home that invites you to celebrate life's moments.



### BATHROOM FITTINGS

Top performance that goes beyond DESIGN

Enjoy the stunning, elegant design and reliable functionality of GROHE faucets. Unique design and innovative technologies allow you to discover a whole new level of comfort every day.

### EUROPEAN MARKET LEADER IN SANITARY PRODUCTS

Operating worldwide, the Geberit Group is the European market leader in sanitary products. Geberit operates with a strong local presence in most European countries, providing unique added value in sanitary technology and bathroom ceramics.



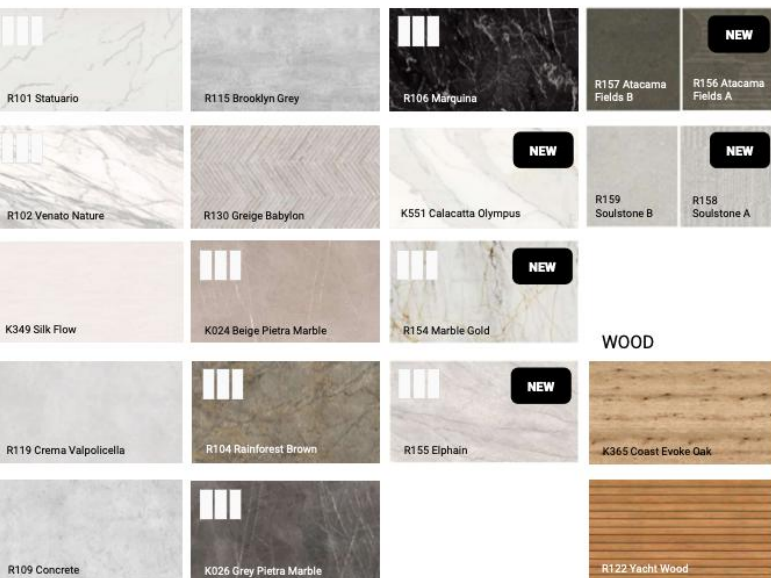
# WALL

**ROCKO**  
by Kronospan

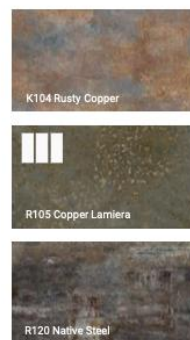
Rocko Tiles waterproof, large-format wall tiles are a true revolution among cladding and decorative materials.

Rocko Tiles are available in a range of fashionable designs that perfectly imitate wood, concrete or marble and can be used in living rooms, kitchens and bathrooms. The light and thin tiles replace paint, wallpaper, stoneware or ceramic tiles on the wall. Rocko tiles are completely waterproof, hygienic and dimensionally stable. They are the ideal material for finishing your dream bathroom.

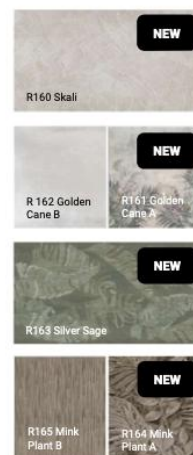
## STONE



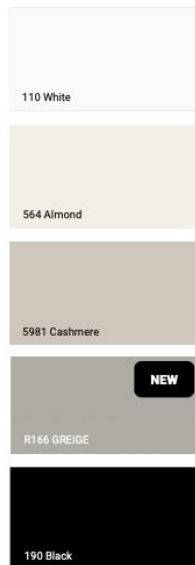
## METAL



## ORGANIC



## COLOR





# KITCHEN



## KITCHEN EQUIPMENT

- Induction hob
- Built-in oven
- Built-in dishwasher



Built-in fridge-freezer

## ADDITIONAL OPTIONS



Heating mat 220W/m<sup>2</sup> integrated into the house floor, controlled by WI FI

Additional modern and very economical heating system



Pleated blinds for internal windows

Triple or double air conditioning



Electric roller

Photovoltaic installation with solar panels





**J. A. K. MODULES**

the bull under the steel frames