

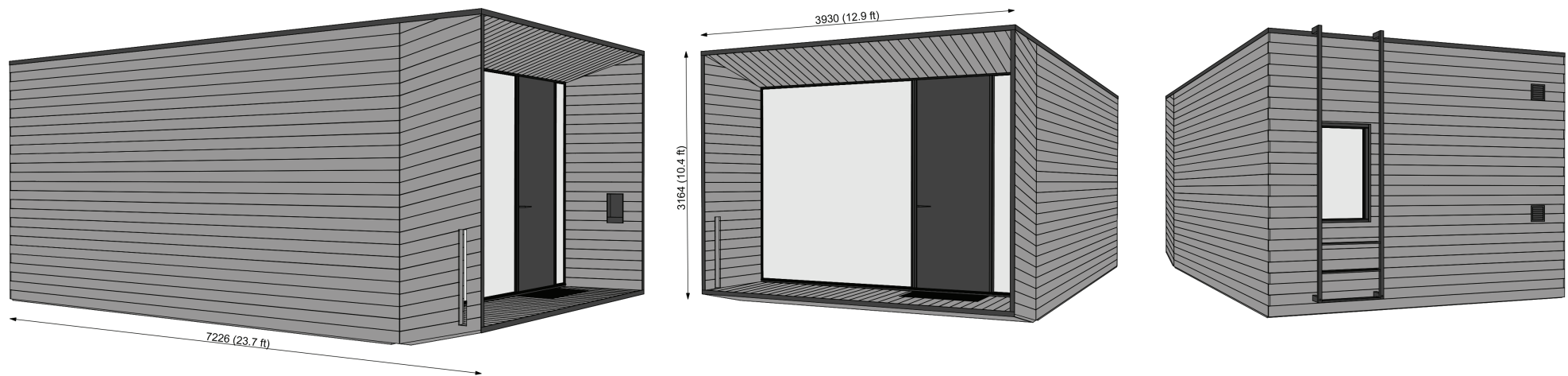
Area of building perimeter: 28.8 m<sup>2</sup>  
Usable floor area: 20.5 m<sup>2</sup>  
Weight: ca 9 t  
Roof snow load: 400kg/m<sup>2</sup>

External:  
L = 7226 mm + 200 mm ladder  
W = 3930 mm  
H = 3164 mm

Internal:  
L = 5918 mm  
W = 3416 mm  
H = 2500 mm  
V = 50,5 m<sup>3</sup>

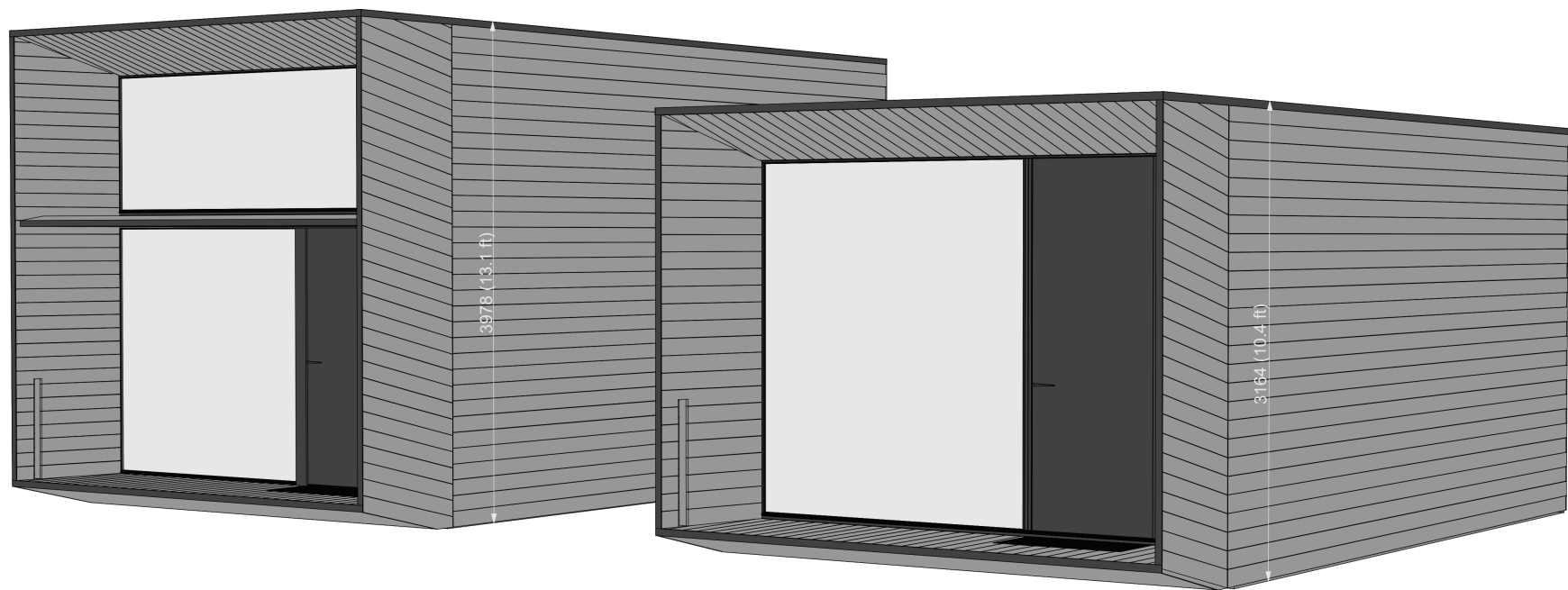
# KODA Compact

23.11.2019



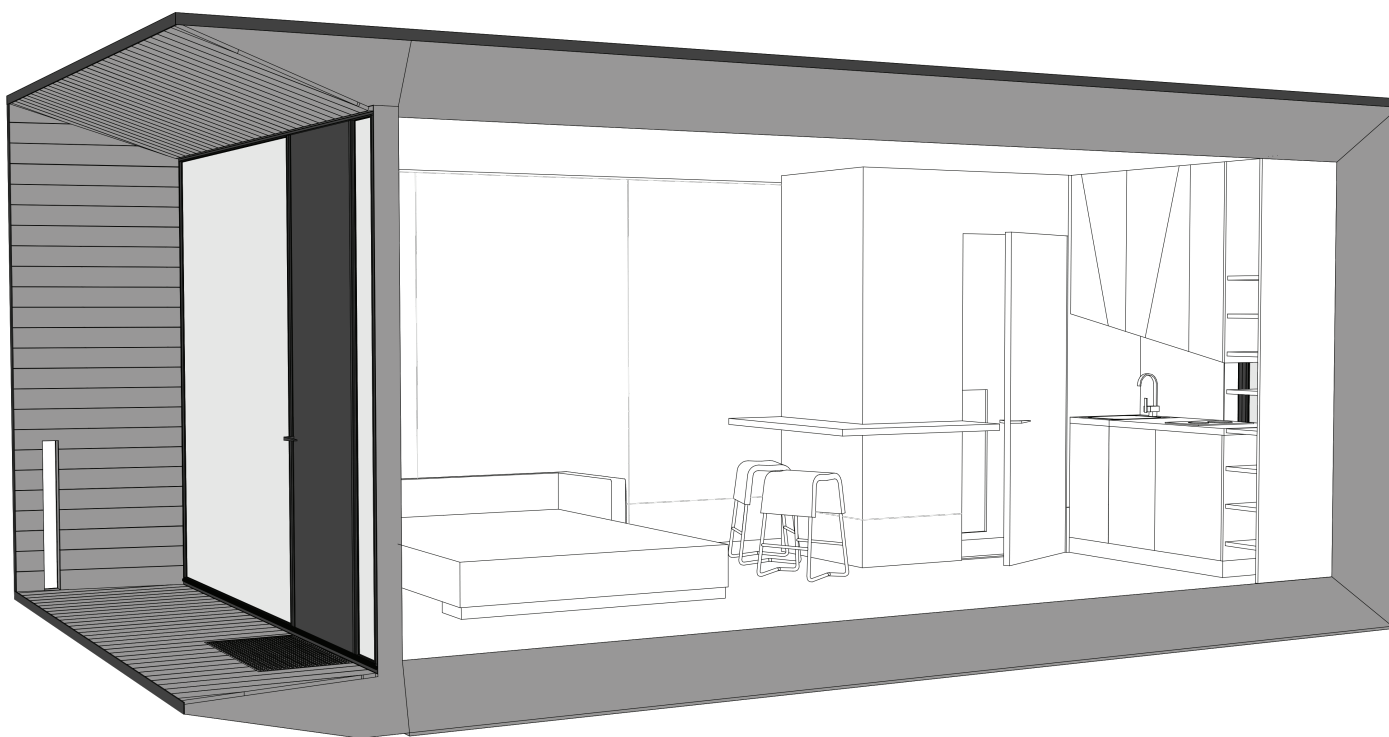
KODA Compact / exterior 3D scheme / KODA by Kodasema

23.11.2019



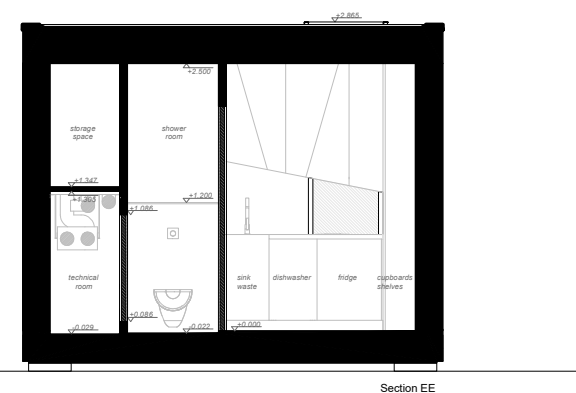
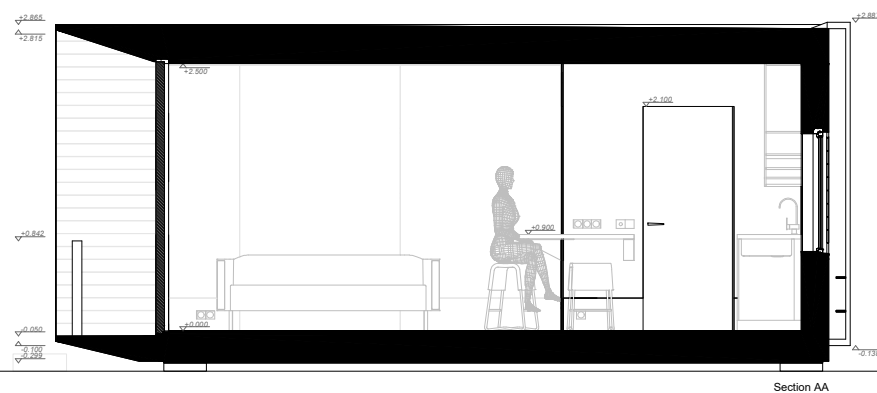
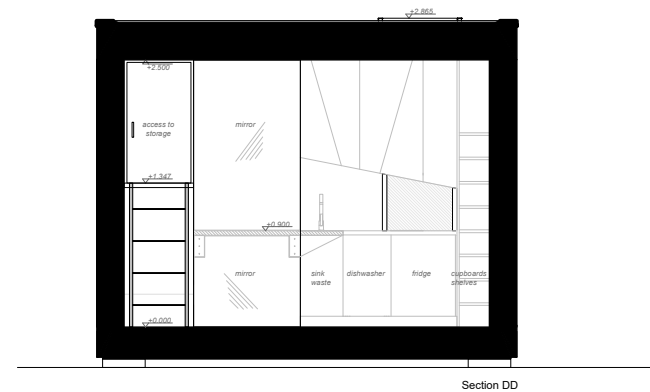
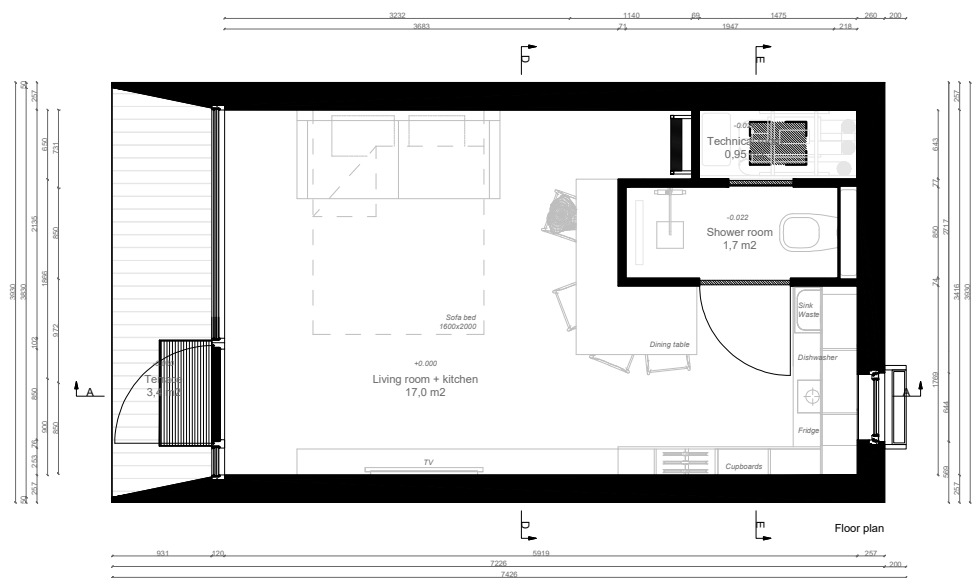
KODA Light vs KODA Compact / KODA by Kodasema

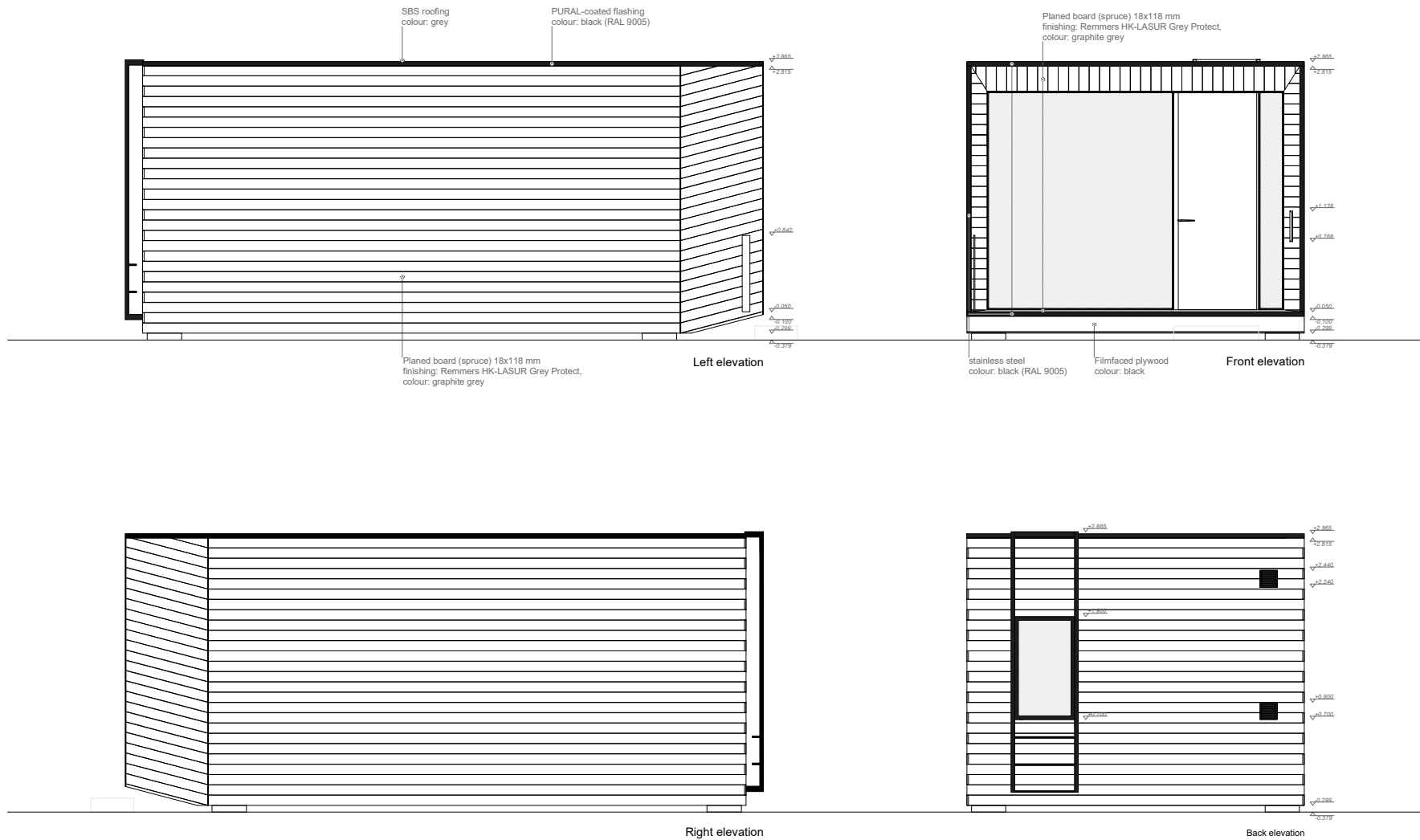
23.11.2019



KODA Compact / interior 3D scheme / KODA by Kodasema

23.11.2019





## STRUCTURE

KODA walls, floor, ceiling, terrace  
Interior finish: plywood walls, laminate floor  
Glass facade, 3 layered  
Openable kitchen window  
Front door  
Sunshade  
Technical room

MEP (Mechanical, Electrical, Plumbing)  
Electrical connection 20A 3F  
Electric floor heating  
LED lighting, readiness for pendant lights  
Sewerage connection 110mm  
Water connection DN15  
Ventilation (PAX EOS 100H)  
Water boiler

## FURNISHING

Kitchen cabinets including  
· Built-in fridge  
· Induction hob  
Full size mirror in living area  
Bathroom with sanitary equipment

## EXTERIOR EQUIPMENT

Mailbox (open)  
Ladder installed on back wall  
Bicycle holder

## EXTERIOR FINISH

Timber cladding by default  
Steel cladding, at extra cost  
Composite panel, at extra cost

## EXTRAS

Natural parquet floor  
Kitchen hood  
Kitchen cabinets on side wall  
Integrated dining table  
Dishwasher or washing machine  
Premium mixers in bathroom and kitchen

CONTACT US FOR FURTHER INFORMATION

KODA by Kodasema  
[sales@kodasema.com](mailto:sales@kodasema.com)  
[www.kodasema.com](http://www.kodasema.com)  
[#kodabykodasema](https://www.instagram.com/kodabykodasema)

KODA Compact

23.11.2019